





mounting  
systems


**DOME**  
SOLAR



 Pitched roofs

 Flat roofs

 Canopies

 Ground-mounted systems

 MADE IN FRANCE

# CONTENT

## ABOUT US

A Message from the Management	4-5
Dome Solar / mission & values	6-7
Mounting Systems X Dome Solar	8
Planet Passionate	9

## PITCHED ROOFS

Our range	10-11
Helios B <sup>2</sup>	12
Kogysun + & I+	13
Ital-Solar	14
D160 Bifacial	15
Fibro-Solar	16
RB-Solar	17
NPA+ Side	18
NPA+ Top	19
PowerRail	20
Other systems	21
Clip-on mounting & universal mounting	22

## FLAT ROOFS

Our range	24-25
Roof-Solar / Bitumen, TPO, PVC, Evalon®, Bitumen Concrete & CLT	26-27
Mounting Systems / Light X & FD3	28-29
Other systems	30

## SOLAR CARPORTS AND CANOPIES

Our range	32-33
Specific applications & solutions	34
Helios RC3	35

## GROUND-MOUNTED SYSTEMS

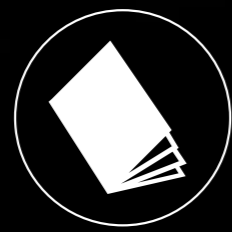
Sol-Solar	38
-----------	----

## DOME SOLAR, INSPIRED BY THE SUN

Our photovoltaic installations / pitched roofs, flat roofs and canopies	40-41
---	-------

## RESOURCES

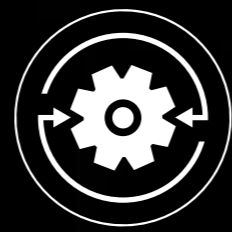
Support, quote requests, search tool, training, application	42-43
---	-------



THE WIDEST RANGE ON THE MARKET WITH ATEC/ETN CERTIFICATIONS



PREMIUM QUALITY



A DEDICATED AND RESPONSIVE TEAM TO QUICKLY SUPPORT YOUR PROJECTS

# SIGNS OF TRUST

Solar energy is becoming a cornerstone of the French and European energy systems.

This fundamental shift is redefining the balance: it requires bringing generation closer to consumption through the development of new applications such as self-consumption and storage. This transformation is now accelerating against a more unstable backdrop, marked by regulatory changes, sometimes contradictory political signals and growing technical complexity.

In this context, it is becoming necessary to collectively raise our standards. Not by adding complexity, but by providing solutions that are more reliable, simpler and truly adapted to the realities on the ground.

At Dome Solar, we design systems that make installation easier, ensure the safety of installations and guarantee the long-term durability of photovoltaic modules, regardless of the type of roof. Because beyond performance, it is the quality of workmanship and durability that make the difference on your sites.

In an uncertain climate, our role is clear: to provide you with practical, proven and high-standard solutions, enabling you to work with confidence and efficiency.

We believe that the future of the industry rests on this collective commitment. And we are determined to contribute to it, alongside you, every day.

**Jean-Philippe LERAY**  
CEO Dome Solar

**Josselin NOIRE**  
Managing Director Dome Solar

# A key player in eco construction

« Dome Solar offers the widest range of mounting systems in the market for pitched roofs, flat roofs, solar canopies and ground-mounted systems.»



## Tailored support and a responsive service

- Solutions tailored to the regulatory, standard-based and technical requirements of each project.
- Specific design calculations, certifications (Atec and ETN) and technical support.
- Training and support for installation teams.

## An integrated industrial facility

- In-house roll forming lines for rail production.
- Control over quality, traceability and lead times.
- Ability to adapt quickly to specific projects.



## A bespoke, one-of-a-kind test bench

- Mechanical strength testing of systems.
- Fatigue cycles that replicate real-world stresses.
- Continuous improvement based on practical testing.

## The strength of an international group

- Part of the Kingspan Bacacier Group.
- Financial stability and the capacity for long-term investment.
- Support for international projects in 220 countries.



## SOME KEY FIGURES

- +5 GW installed using our Dome Solar systems
- 100 employees
- €60 million in turnover by 2025



- 1 Dome Solar Headquarters  
3 rue Marie Anderson  
44400 Rezé, FRANCE
- 2 Dome Solar La Rochelle Agency  
4 rue Alfred Nobel  
17440 Aytré, FRANCE
- 3 Dome Solar Montauban Agency  
382 rue des Tamaris  
82000 Montauban, FRANCE



## mounting systems



# Dome Solar, a committed company

### Mounting Systems x Dome Solar: A comprehensive range for the European market

Dome Solar is continuing its expansion with the integration of the Mounting Systems brand and associated key technologies. This merger is part of an industrial and strategic approach aimed at enhancing the consistency and comprehensiveness of Dome Solar's product range across all types of photovoltaic roofing systems.

A European leader in photovoltaic mounting systems, Mounting Systems draws on several decades of expertise and significant international experience, with over 13 GW of systems deployed across 8,000 projects in more than 70 countries.

These achievements complement the 5 GW installed using Dome Solar solutions, thereby consolidating a solid and proven technical foundation.

This integration enables Dome Solar to draw on recognised technologies, whilst maintaining its high industrial standards and close connection to real-world conditions.

Part of a socially responsible group through its "Planet Passionate" programme

### Continued integration of low-carbon steel into our projects:

- To reduce the carbon footprint by two-thirds (from 2.8 tonnes to 800 kg of CO<sub>2</sub> per tonne of steel).
- Through the use of recycled steel on the one hand, and renewable energy in the manufacturing process of the raw material on the other.
- Rolled in France with specific traceability.



### CARBON

Net-zero carbon manufacturing by 2030.



### ENERGY

60% direct renewable energy by 2030.



### RECYCLING

1.5 million tonnes of recycled and renewable raw materials used each year by 2030.



## Fixing into the purlin

Single skin metal tray



Helios B<sup>2</sup>



Ital-Solar



S360M



Kogysun +

Sandwichs panels



Kogysun i+



Ital-Solar



HB Dual

Fiber-cement sheets



Fibro-Solar

## Fixing to the metal sheet

Single skin metal tray



NPA



NPA+ Side



NPA+ Top



RB-Solar



D160 Bifacial



NPO NPA



PoweRail

Sandwichs panels



NPA



NPA+ Side



# Helios B<sup>2</sup>

Fixing into the purlin

**AVIS**  
TECHNIQUE  
**Hélios B<sup>2</sup>**  
n°21/15-53\_V9 published on 10/12/2025

Single skin  
metal tray

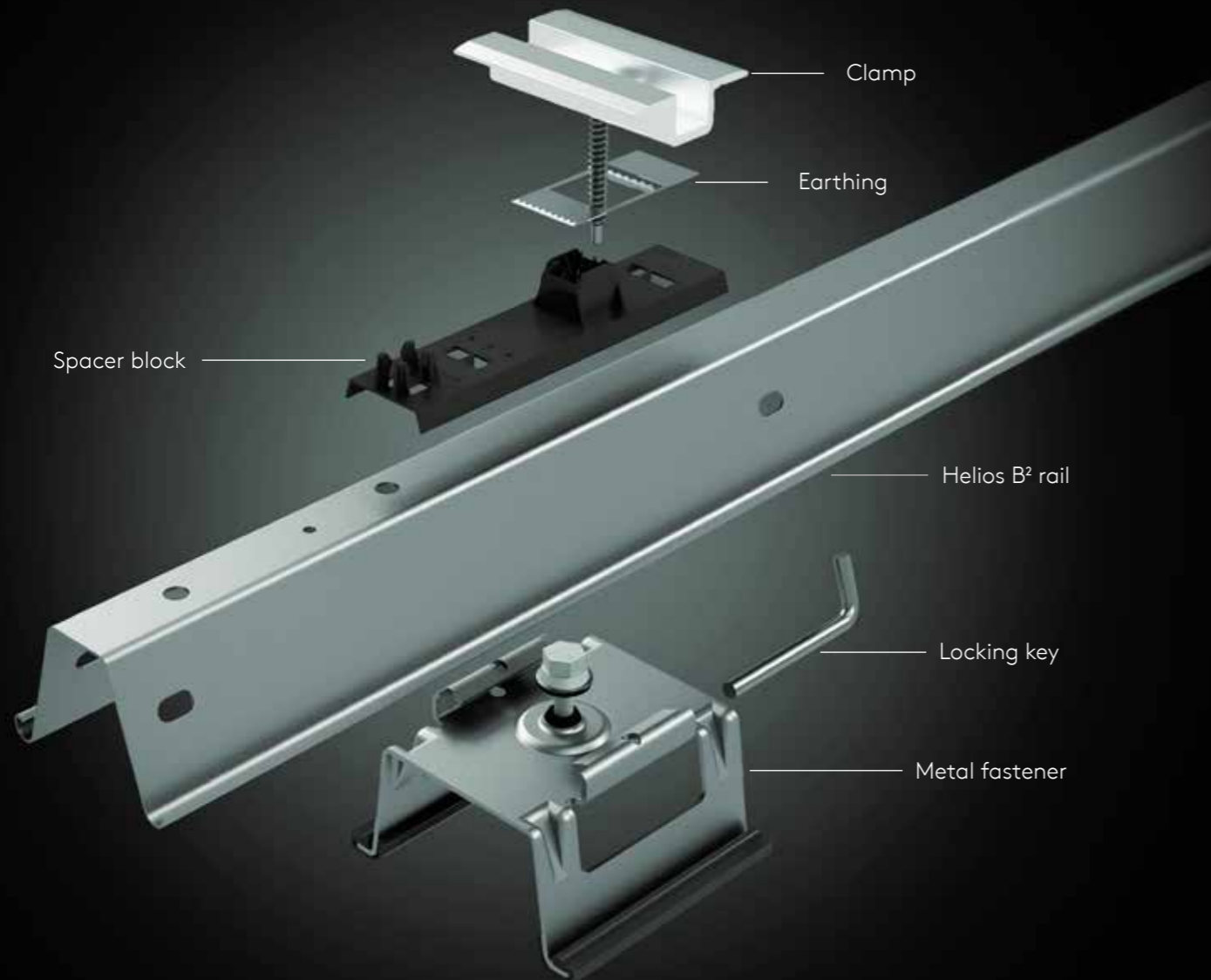
Green list  
C2P

Landscape  
orientation

Low-carbon  
green steel

Broof (t3)

FDES



Clamp

Earthing

Spacer block

Helios B<sup>2</sup> rail

Locking key

Metal fastener

# Kogysun + & I+

Fixing into the purlin

**AVIS**  
TECHNIQUE  
**Kogysun +**  
n°21/18-63\_V3 published on 12/06/2023

Single skin  
metal tray

**AVIS**  
TECHNIQUE  
**Kogysun i+**  
n°21/18-64\_V5 published on 14/01/2026

Sandwich  
panels

Landscape  
orientation

Green list  
C2P

Broof (t3)



Clamp

Kogysun rail

Upper  
extension

Lower  
extension

## KEY FEATURES

- Fastening directly into the roof purlin without the need for additional drilling in the metal sheet.
- Custom-cut rails tailored to the PV module's width for faster and easier installation.
- A generous 92 mm air gap under the module ensures excellent ventilation.



## KEY FEATURES

- Patented system with a riser allowing free expansion of the assembly.
- The only system under ATec for rock wool and PIR sandwich panels.
- Excellent module ventilation (115 mm air gap).
- Spacer included to prevent compression of the sandwich panel insulation.





Single skin  
metal tray



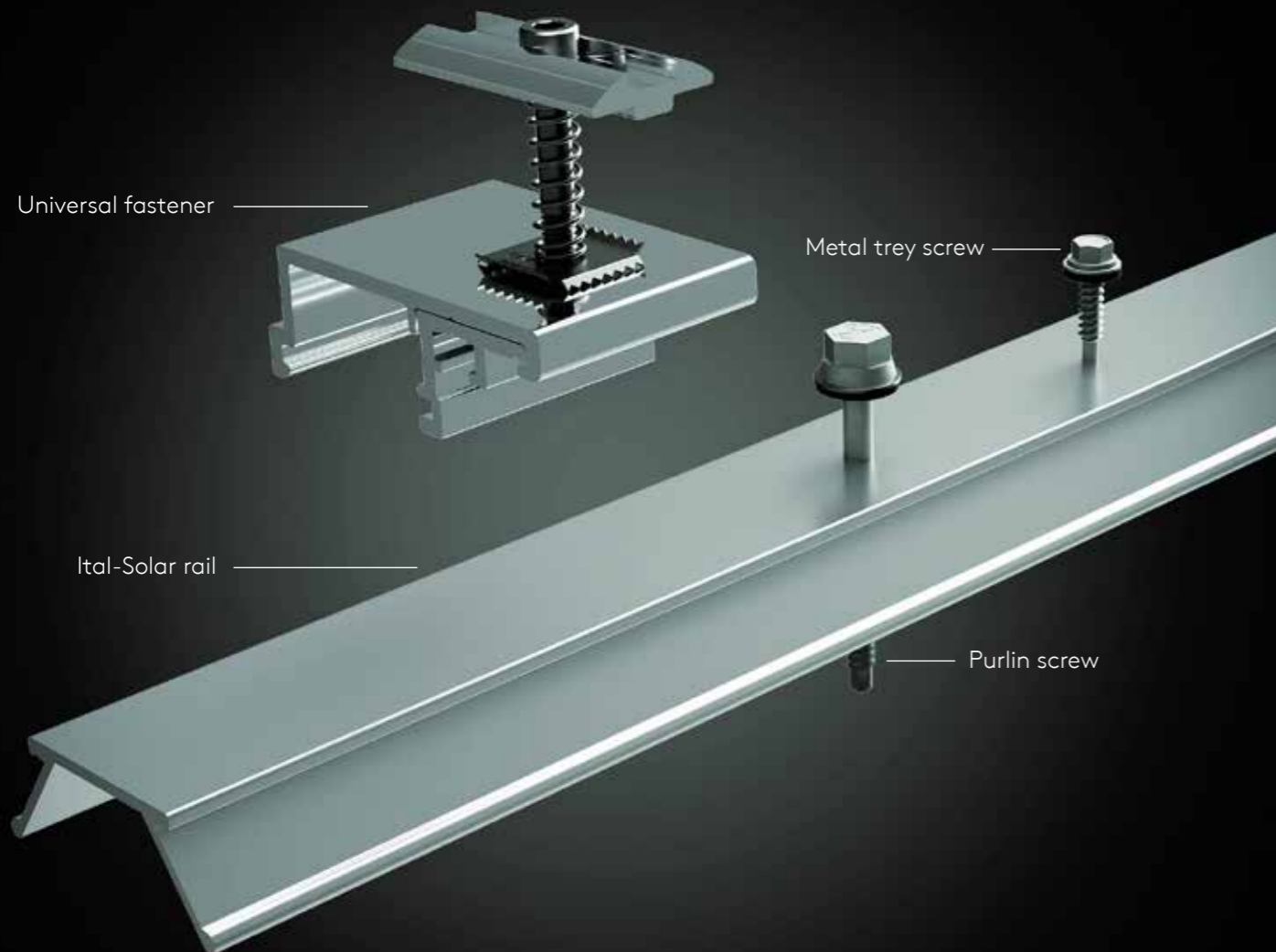
Sandwich  
panels



Landscape  
orientation



Broof (t3)



## KEY FEATURES

- Highly durable system, making it ideal for use in coastal and other demanding environments.
- Dual fastening rail design : secured directly to the crown of the metal tray, with attachment to both the roof purlin and metal tray.
- Suitable for sandwich panels with a purlin spacing exceeding three meters.



Single skin  
metal tray



Landscape  
orientation



Reverberation



## KEY FEATURES

- 160 mm air gap enabling enhanced ventilation of the modules and improved performance.
- Optimizes rear-side production of bifacial modules.
- Quick clip system: easier installation and maintenance.



# Fibro-Solar

ETN  
Enquête de  
Technique  
Nouvelle



Fibro-Solar  
A27T250D

Fiber-cement  
sheets

Landscape  
orientation

Fixing into the purlin



## KEY FEATURES

- Compatible with fiber-cement sheets and tile support sheets.
- High corrosion resistance ensures long-lasting durability.
- Rails are securely bonded and clipped onto the support for reliable installation.



# RB-Solar

ETN  
Enquête de  
Technique  
Nouvelle

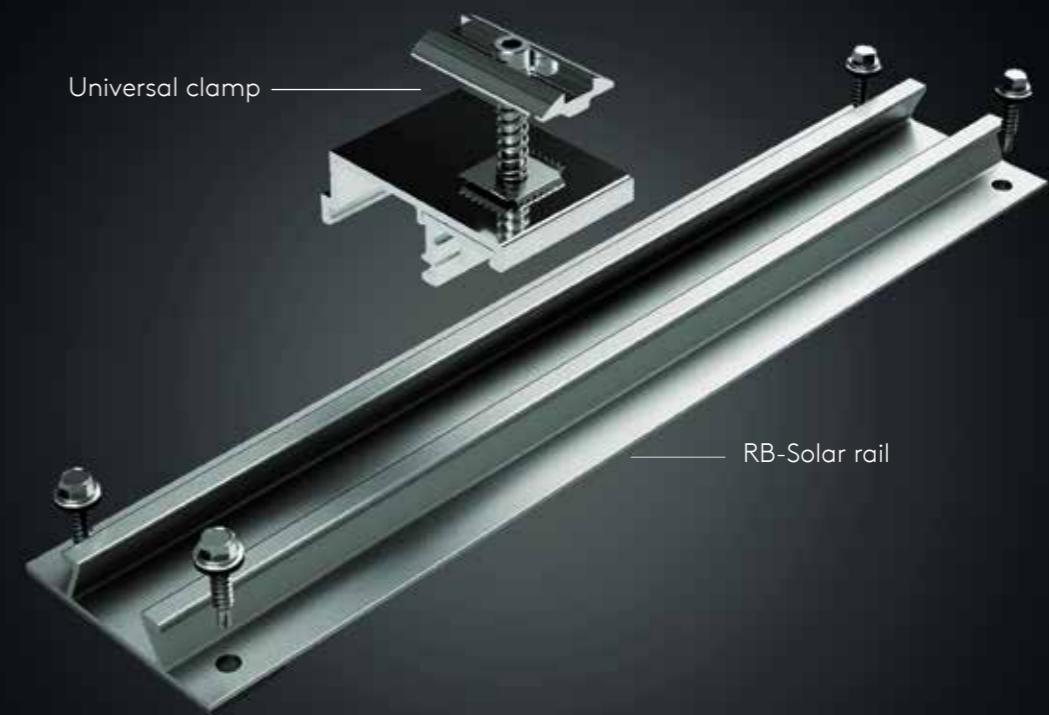


RB-Solar  
L24.08227

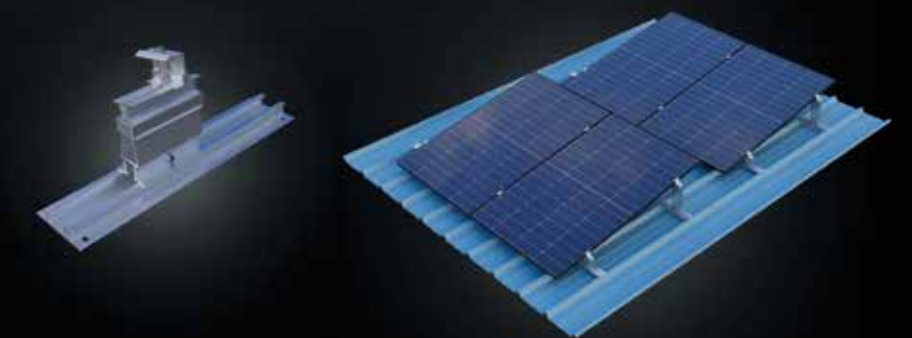
Single skin  
metal tray

Portrait  
orientation

Fixing into the single skin metal tray



## Possible option RB-Solar Tilt



## KEY FEATURES

- Custom rails available (excluding ETN).
- Compatible with most trapezoidal sheet profiles.
- Adaptable to all module widths.
- RB-Solar Tilt: the ideal solution for low-slope industrial roofs, designed to maximise solar performance.



# NPA+ Side

Fixing into the single skin metal tray

ETN  
Enquête de  
Technique  
Nouvelle

NPA+ Side  
L.25.10265



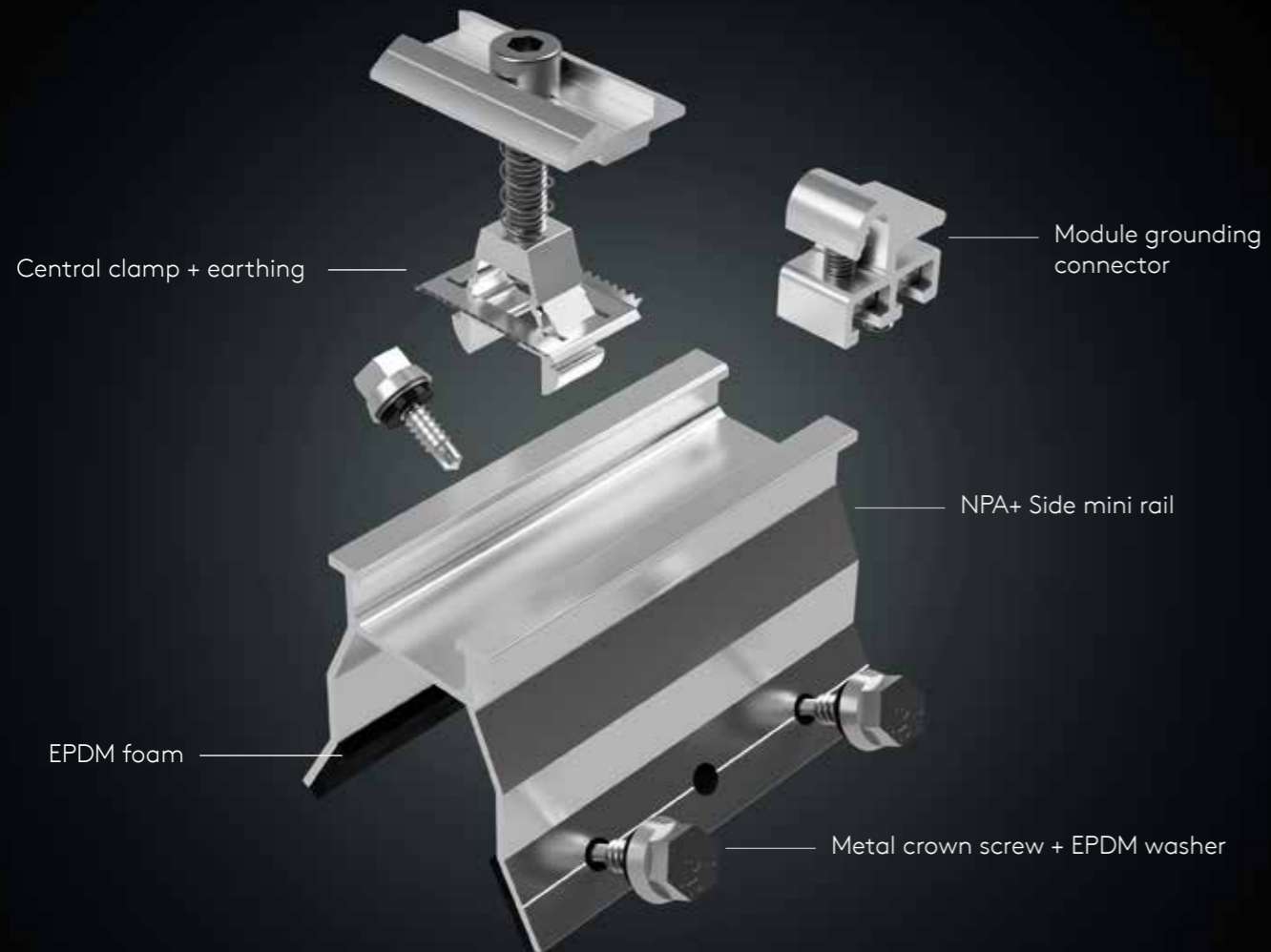
Single skin  
metal tray



Sandwich  
panels



Landscape  
orientation



# NPA+ Top

Fixing into the single skin metal tray

ETN  
Enquête de  
Technique  
Nouvelle

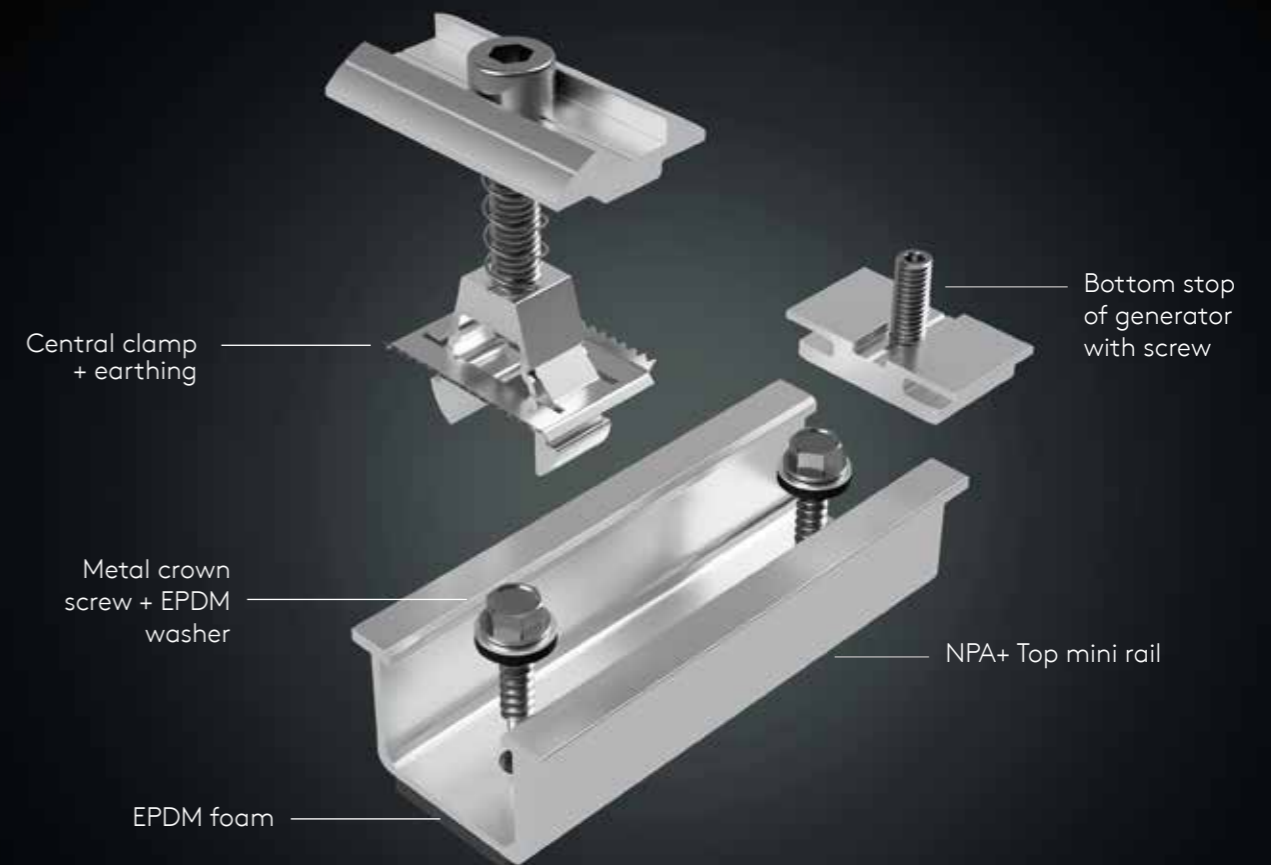
NPA+ Top  
L.25.10264



Single skin  
metal tray



Landscape  
orientation



## KEY FEATURES

- Quick clip-in system : easier installation.
- Excellent resistance to climatic loads.
- Compatible with single metal deck and sandwich panels.
- Compatible with a wide range of tray geometries.



## KEY FEATURES

- Quick-fit clip system: easy installation and maintenance.
- Can be installed at the ridge.
- Excellent resistance to weather conditions.
- Compatible with a wide range of flat panel and sandwich panel profiles.





## KEY FEATURES

- Design inspired by the KS1000 Quadcore sandwich panel.
- Fixing on the sides of the wave, ensuring strong pull-out resistance.

## Other systems



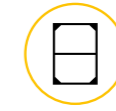
### NPO-NPA

Fixing into the single skin metal tray

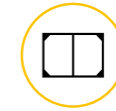
ETN  
Enquête de  
Technique  
Nouvelle  
NPO-NPA  
A27T2202



Single skin  
metal tray



Portrait  
orientation



Landscape  
orientation



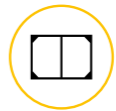
### S360M

Fixing into the purlin

ETN  
Enquête de  
Technique  
Nouvelle  
S360M  
A27T250W



Single skin  
metal tray




Landscape  
orientation



# Clip-on Mount


Simplified maintenance thanks to the clip-on mounting system  
(available with universal or external fixings)


 NPA+ Side, NPA+ Top



# Universal Mount

Mounting system included with most  
of our systems

 Ital-Solar, RB-Solar, Fibro-Solar

 Roof-Solar Bitume, Roof-Solar PVC, Roof-Solar TPO,  
Roof-Solar EPDM, Roof-Solar EVALON®

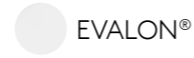


# Our range



## Rail welded/bonded to the seal

Compatible membranes



### Benefits

- All types of buildings\*: logistics centers, commercial industrial, and residential buildings.
  - No waterproofing penetration.
  - Fast and easy installation.
  - Lightweight system, up to 2.5kg/m<sup>2</sup>.
  - Panels can be tilted up to 10°.
  - Over 10 cm air gaps beneath the modules.
  - Easy disassembly without damaging the membrane.
  - Corrosion-resistant materials.
- \*buildings subject to biodiversity laws*

Our rails equipped with pre-mounted waterproofing strips



**Roof-Solar Bitumen TAN DTU - Flat & Tilted**  
n°21/20-72\_V5 published on 14/11/2025



**Roof-Solar Bitumen TAN GP - Flat & Tilted**  
n°21/24-86\_V2 published on 14/11/2025



**Roof-Solar TPO TAN DTU - Flat & Tilted**  
n°21/24-87\_V1 published on 09/01/2025



**Roof-Solar PVC TAN DTU - Flat & Tilted**  
n°21/22-82\_V4 published on 14/11/2025

### ATEX

**Roof-Solar Evalon® TAN DTU & TAN GP - Flat & Tilted**  
n°3431\_V1 published on 22/11/2024

Flat or tilted installation

Tilted



Tilt top



Tilt bottom

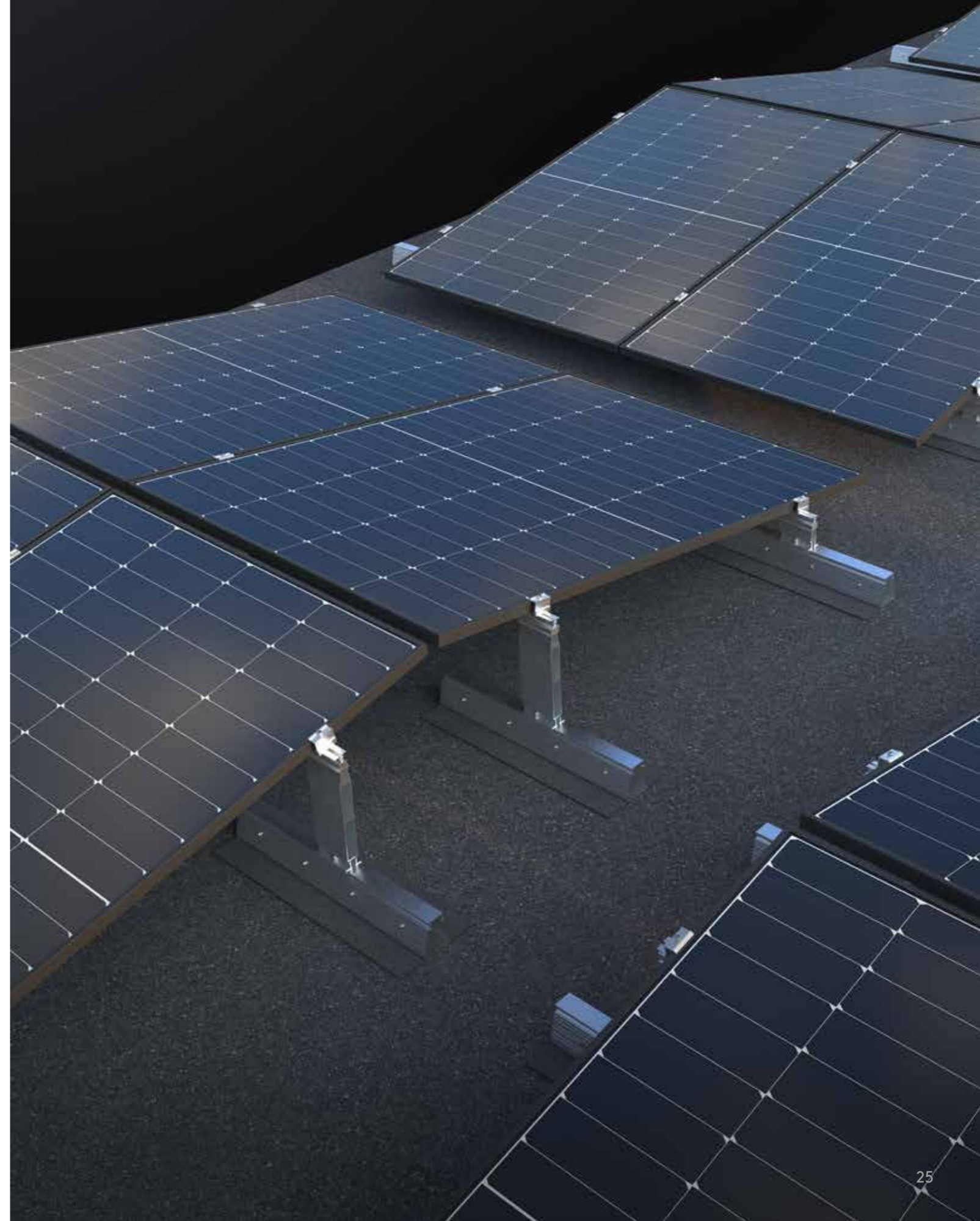
Flat



Roof-Solar 600 rail + accessories



Our entire Roof-Solar range is **Broof(t3) certified.**



# Breakdown of the components of a complex

## 3 angles

Flat mounting system



South facing mounting system

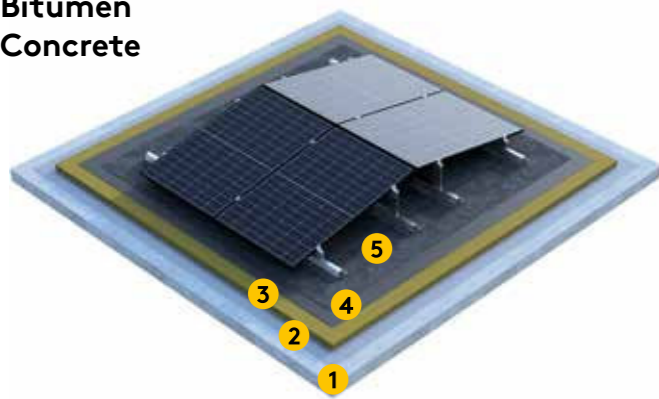


East-West mounting system

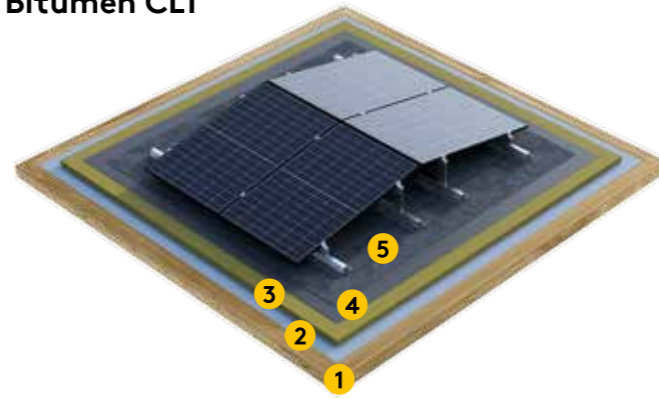


## 6 system configurations

Roof-Solar  
Bitumen  
Concrete



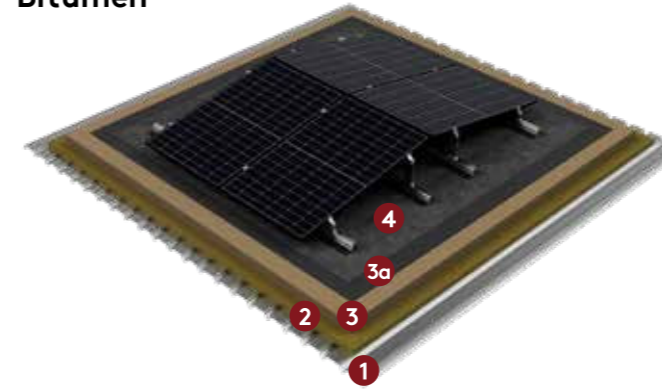
Roof-Solar  
Bitumen CLT



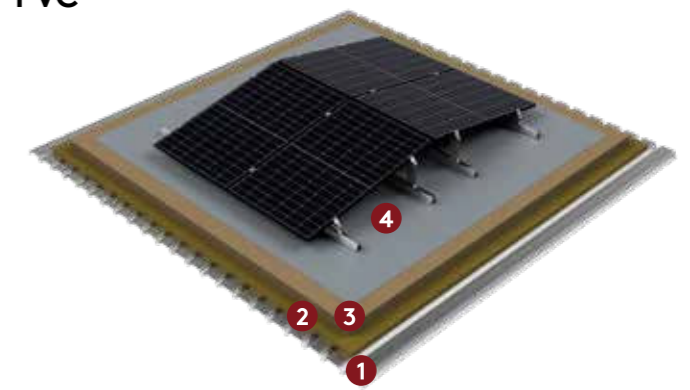
- 1 Structural element in concrete or CLT
- 2 Vapour barrier
- 3 IKO ENERTHERM ALU XL PRO (PIR) thermal insulation

- 4 1<sup>st</sup> layer IKO DUO STICK L4 T3 SI
- 5 2<sup>nd</sup> layer IKO DUO FUSION AR/F or IKO DUO FUSION FEU AR/F or IKO DUO FUSION G/F or IKO DUO FUSION ALU/F

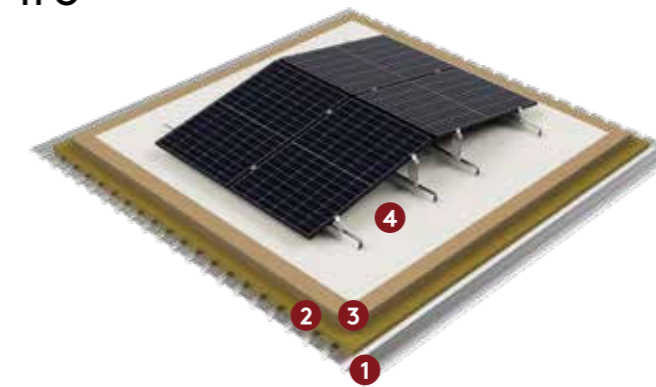
Roof-Solar  
Bitumen



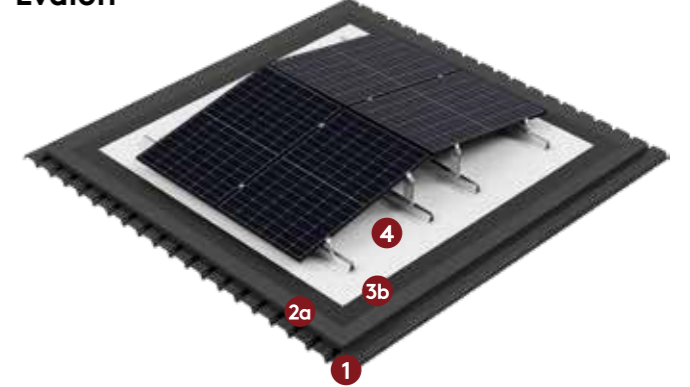
Roof-Solar  
PVC



Roof-Solar  
TPO



Roof-Solar  
Evalon®



- 1 Structural element in profiled steel sheets
- 2 Thermal barrier layer
- 2a Cellular glass thermal insulation
- 3 Polyisocyanurate (PIR) thermal insulation, Class C
- 3a 1<sup>st</sup> layer IKO DUO ACIER F/G by IKO

- 3b Elastomeric bituminous membrane
- 4 Waterproofing layer
  - a. Second layer IKO DUO ACIER 3000 FIRE L4 AR/F or IKO DUO SOLAR ALU/F
  - b. IKO ARMOURPLAN SM 150 membrane width 1.06 m
  - c. UltraPly TPO membrane HOLCIM (ELEVATE)
  - d. Evalon® 1.5 membrane DERBIGUM France

# From bonded systems to ballasted systems

## A single partner for all flat roof configurations

Dome Solar strengthens its flat roof offering with the integration of ballasted mounting systems Light X and FD3, developed by Mounting Systems.

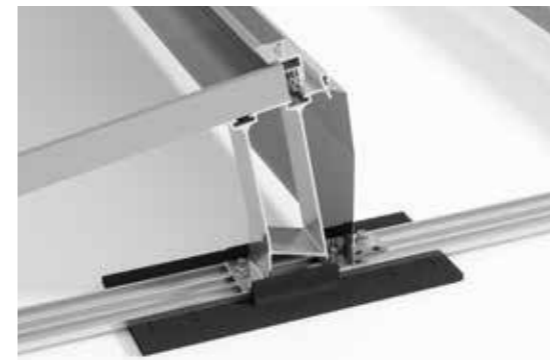
This development makes it possible to address a broader range of projects, particularly where non-penetrating solutions, fast installation, and roof load optimisation are key requirements.

These solutions are backed by Mounting Systems extensive experience, a leading European player with several decades of engineering expertise, and more than 13 GW installed across over 8,000 projects in more than 70 countries.

By combining Dome Solar's integration expertise with Mounting Systems' proven ballasted technology, we deliver reliable and high-performance solutions designed to optimise costs, accelerate installation, and meet the structural constraints of flat roofs.

## Light X - S & EW

The simplest and most cost-effective solution for flat roofs, without compromising on reliability.



### KEY FEATURES

**Streamlined design = minimal system cost**  
→ Reduced number of components  
→ Easy handling and simplified logistics

**Hybrid compatibility (ballasted + bonded)**  
→ Flexibility depending on roof constraints  
→ Improved mechanical resistance compared to ballasting alone

**DEHN certified**  
→ Proven safety and compliance

Light X-S



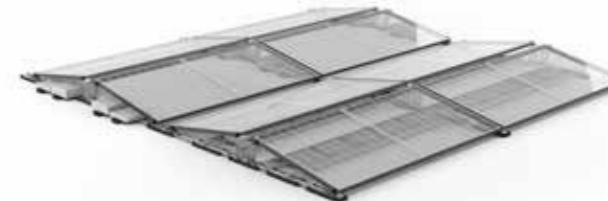
Light X-EW



## Light X Speed

**Build faster. Install smarter.**

The fastest installation solution for large-scale projects where speed and cost are key priorities.



### KEY FEATURES

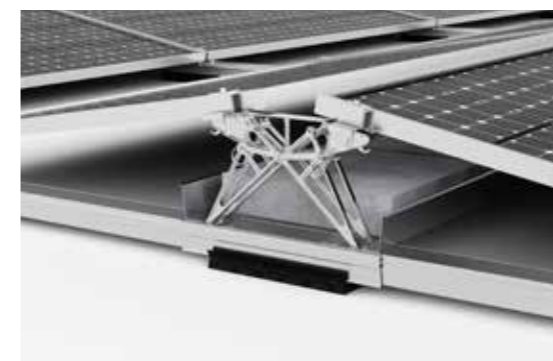
**Pre-assembled for maximum installation speed**  
→ Base rail ready to install  
→ Reduced labour time and fewer on-site errors

**Hybrid technology (ballasted + bonded)**  
→ Reduced ballast = lower roof load  
→ Increased wind resistance and improved system stability

**Certified performance (DEHN)**  
→ Reliable integrated lightning protection

## FD3

The most versatile flat roof system, combining engineering precision with installation flexibility.



### KEY FEATURES

**Hybrid material design (aluminium + zamac)**  
→ Lightweight structure + high-strength, precision locking components  
→ Optimal balance between durability, precision and cost

**Maximum layout flexibility**  
→ Compatible with landscape orientations

**Performance-optimised design**  
→ Adjustable tilt (10° / 15°) to optimise yield  
→ Integrated cable management for clean and secure installations

# Other systems

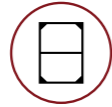


## ROOF-SOLAR EPDM

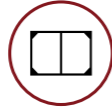
Mechanically fixed base disc to the roof

ETN  
Enquête de  
Technique  
Nouvelle

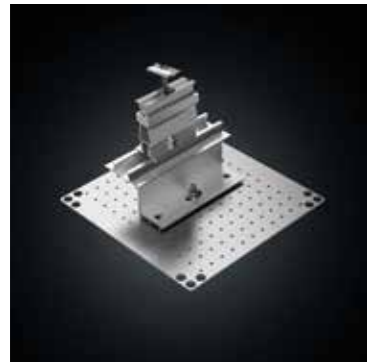
Roof-Solar EPDM  
A27T230E



Portrait  
orientation

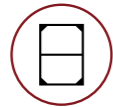


Landscape  
orientation

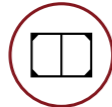


## ROOF-SOLAR M-FIX

Mechanically fixed



Portrait  
orientation



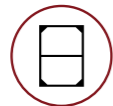
Landscape  
orientation



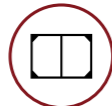
## ROOF-SOLAR GREEN-PV

Designed for biodiverse and vegetated rooftops.

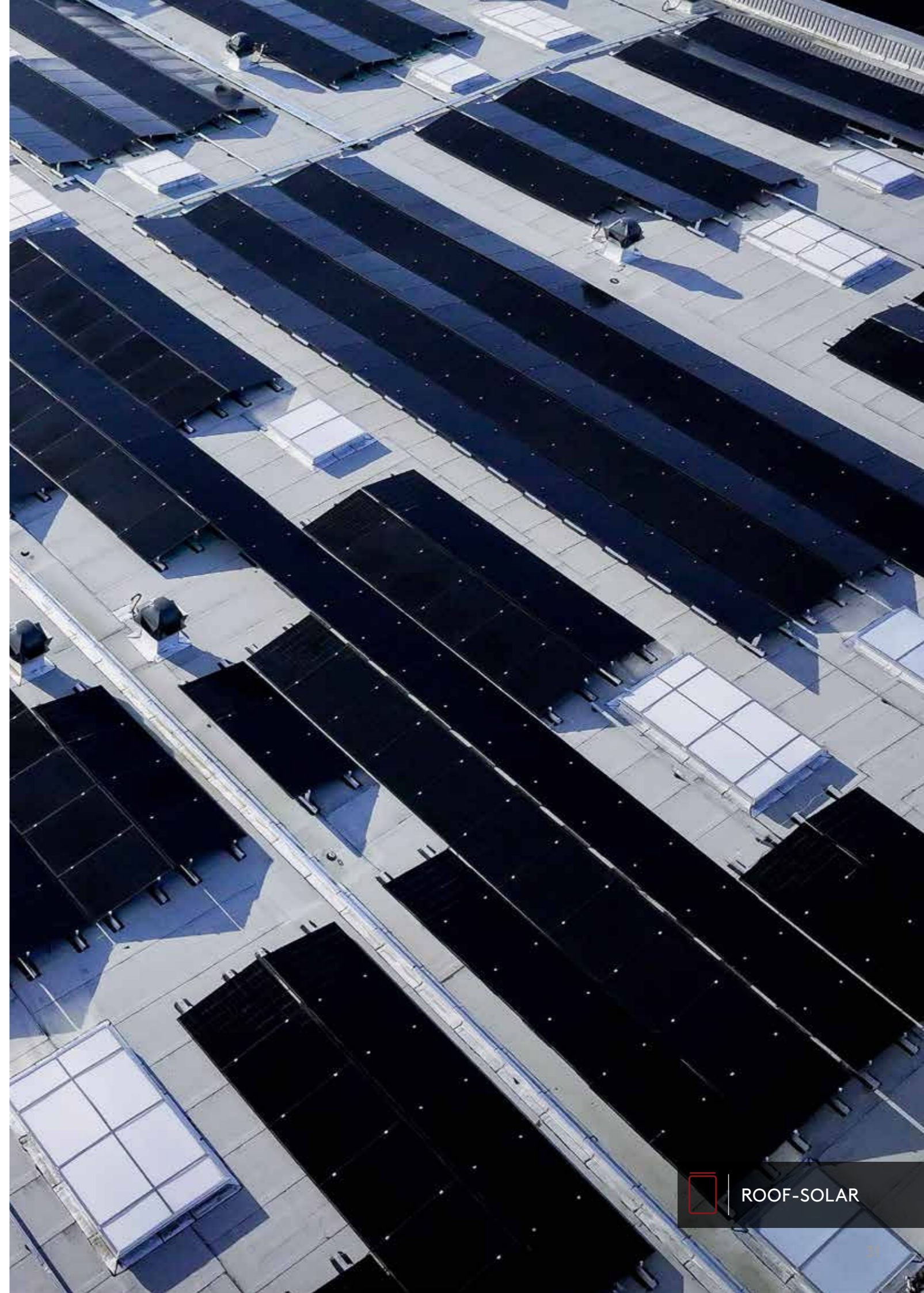
Rails welded to the waterproofing layer



Portrait  
orientation



Landscape  
orientation





## OUR CARPORT RANGE

### The advantages of choosing a solar carport

#### EFFICIENT USE OF SPACE

Solar carports transform parking areas into energy-generating assets without compromising their primary function.

#### TRIPLE FUNCTIONALITY

Shelter protects vehicles. Energy generation produces renewable solar energy. Vehicle internal heat balance.

#### IMPROVED SOLAR ENERGY EFFICIENCY

Unlike rooftops, carports can be customized to achieve optimal panel angle orientation for maximum sun exposure.

#### EV CHARGING CAPABILITY

Solar carports provide a convenient and sustainable solution for EV charging using clean energy.

#### ROOFTOP ALTERNATIVE

Ideal for properties where rooftops are unsuitable due to shading, structural limitations, or aging infrastructure.

#### AESTHETIC AND BRANDING OPPORTUNITY

Carports provide a sleek, modern design while offering opportunities for corporate branding and visual appeal.

### Why choose the Dome Solar Helios RC3 System ?

<b>Certified Durability</b>	ETN certification ensures exceptional product quality. Exceptional reliability with a claims rate of less than 1%.
<b>Warranty</b>	20 years for the Helios RC3 system. 25 years for Magnelis® materials.
<b>Ease of Installation</b>	Innovative design allows PV modules to be slid into position one-by-one and fastened from below the structure. Eliminates the need for rooftop access or lifts in standard installations. Quick panel placement minimizes installation time and reduces injury risk.
<b>High-Performance Materials</b>	Constructed using durable aluminium, stainless steel, and Magnelis® steel with a 25-year corrosion warranty (under standard conditions). Low-carbon steel option available to support sustainability goals.
<b>Streamlined Inventory</b>	Minimal components simplify sourcing, handling, and reduce on-site errors. Innovative Drainage System
<b>Customizable Aesthetics</b>	Powder coating available for components such as Omega rails, clamp rails, and cover flashings to match project aesthetics.
<b>Dedicated Technical Support</b>	A specialized expert technical design team provides full support throughout the project lifecycle.



# Applications & specific solutions

## Our 3 application areas

- Parking
- Storage
- Agrivoltaics

## Our specific solutions

- In agrivoltaic applications we provide spacers for more even redistribution of rainwater
- Powder coating
- Installation options in landscape or portrait. Subject to wind / snow loads and PV modules dimensions.
- Low-carbon steel



# Helios RC3

Carports

ETN  
Enquête de  
Technique  
Nouvelle

Hélios RC3  
L26.10389



Portrait  
orientation



Landscape  
orientation



Low-carbon  
steel



FDES



## KEY FEATURES

- High-quality mounting system: superior long-term stability of the modules, 100% steel/aluminium.
- Innovative system: clip-on gutters; bespoke rails with the option of splicing for roof pitches exceeding 13.15 m.



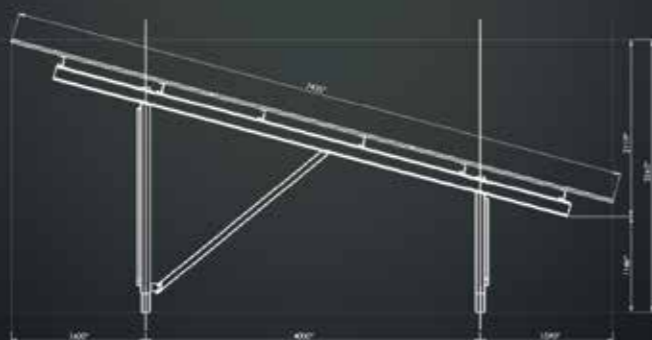




Portrait orientation



2V



3V

2V Small Modules	2V Large Modules	3V Large Modules
2V6	2V6	3V6
2V12	2V9*	3V15
	2V12	3V18
	2V16	3V21
	2V18*	

\*currently being dimensioned

## KEY FEATURES

- Dome Solar / Bacacier By Kingspan solutions: French design and manufacturing.
- Increased frame spacing reduces the number of foundations.
- Modular offer: purchase of tables, or full turnkey solution with installation and project management in France mainland only.
- Two table formats available: 2V or 3V, adaptable to natural or contaminated soils.



# Dome Solar, inspired by the sun




## OUR PHOTOVOLTAIC INSTALLATIONS


Discover some of the successfully completed solar installations by our partner installers, using Dome Solar's photovoltaic mounting systems. Within our extensive range of solar installation references,

you'll find a variety of building categories, including commercial premises, factories, shopping centers, municipal buildings, agricultural sheds, warehouses, parking lot canopies, and much more.




 **ROOF-SOLAR PVC / 196 kWc**  
Italy




 **ITAL-SOLAR / 464.10 kWc**  
France



 **ROOF-SOLAR BITUMEN / 578,55 kWc**  
Lithuania




 **SOL-SOLAR / 250 kWc**  
France




 **NPA 3.45 / 1 MWc**  
France



 **ROOF-SOLAR BITUMEN / 151.7 kWc**  
Morocco



 **HELIOS RC3 / 4.40 MWc**  
France




 **ROOF-SOLAR TPO / 208,8 kWc**  
Costa Rica




 **ROOF-SOLAR TPO / 499,22 kWc**  
Costa Rica




 **HELIOS B<sup>2</sup> / 501.6 kWc**  
France



 **ROOF-SOLAR EVALON® / 805 kWc**  
France



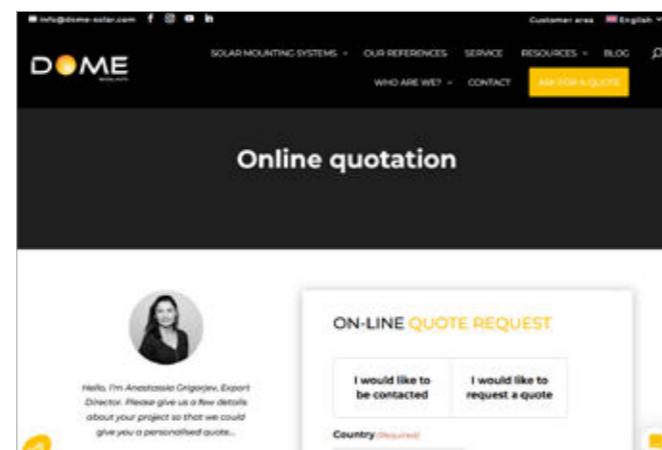
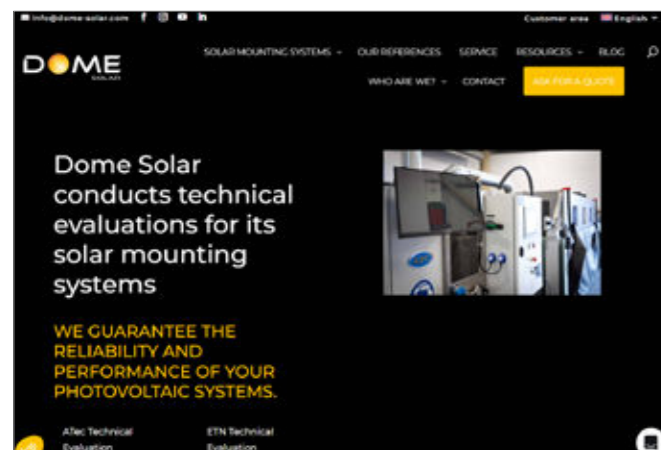
 **HELIOS RC3 / 4.24 MWc**  
France

# Our services



## Expert teams at your side

- Prompt technical support
- Support and assistance on first-time projects
- Project optimisation in collaboration with inspection bodies
- Self-paced training (on-site or online)



## Search engine for certified modules & online quote request

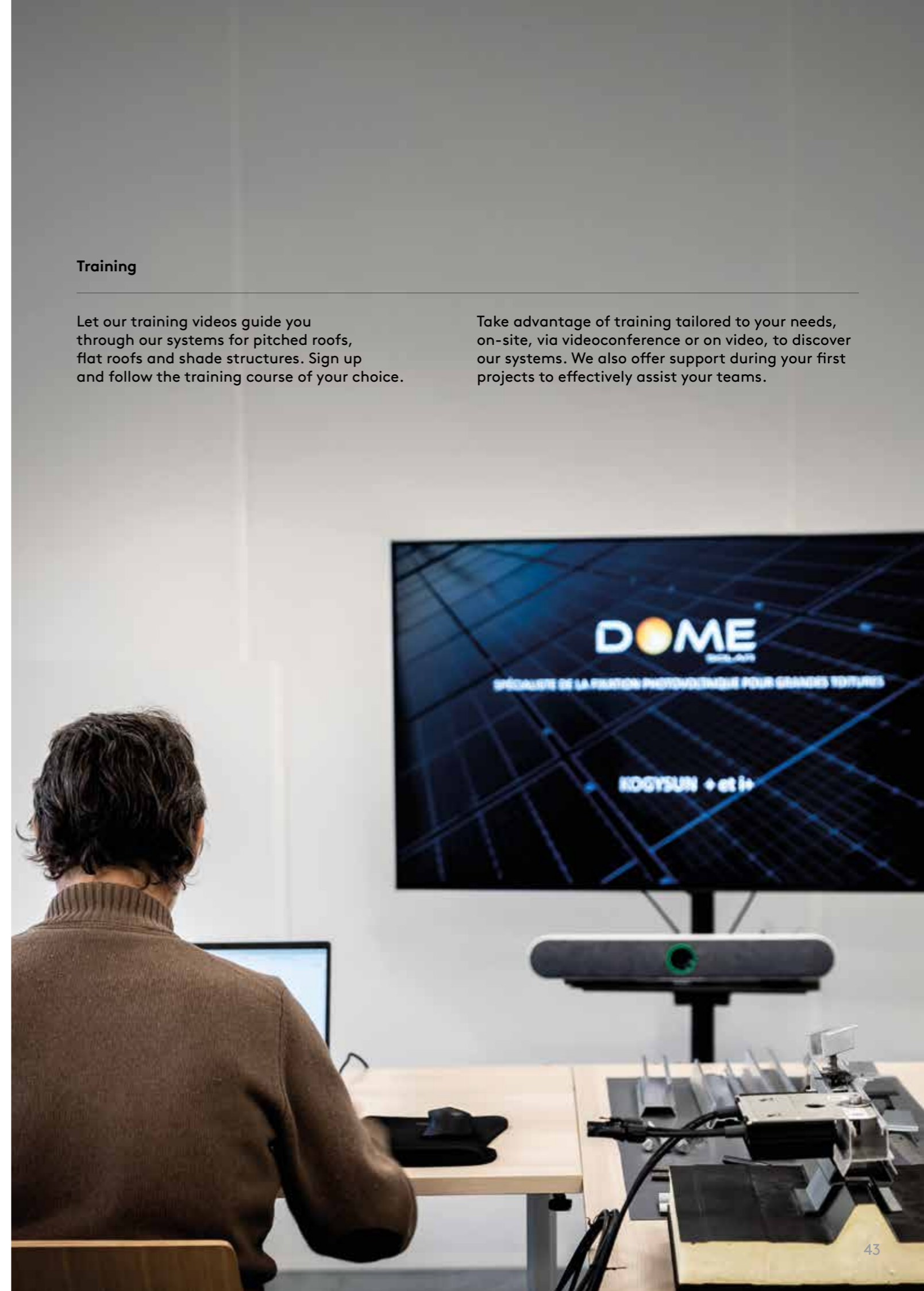
Access the list of Dome-Solar mounting systems approved for your chosen module model in just one click, along with compatible power ratings and associated certifications (ATec, ETN).

Submit your enquiries easily using our online form.

## Training

Let our training videos guide you through our systems for pitched roofs, flat roofs and shade structures. Sign up and follow the training course of your choice.

Take advantage of training tailored to your needs, on-site, via videoconference or on video, to discover our systems. We also offer support during your first projects to effectively assist your teams.





dome-solar.com



mounting  
systems

mounting-systems.com



- 1 Dome Solar Head Office  
3 Rue Marie Anderson  
44400 Rezé, FRANCE
- 2 Dome Solar, La Rochelle Branch  
4 Rue Alfred Nobel  
17440 Aytré, FRANCE
- 3 Dome Solar Agency, Montauban  
382 Rue des Tamaris  
82000 Montauban, FRANCE



DOME SOLAR Photovoltaic Solutions 3 Rue Marie Anderson  
- 44400 Rezé (Nantes) - France DOME SOLAR S.A.S. with a  
share capital of 500,000 euros - APE 2599B - Nantes Trade  
and Companies Register 509 182 309 - VAT No. FR5750918230

Project completed using our Hélios RC3 system  
Leroy Merlin Vertou, France