



EXPERT IN MOUNTING SYSTEMS

MADE IN FRANCE

Dome Solar - 3 rue Marie Anderson  
44 400 Rezé

Tél. +33 (0)2 40 67 92 92

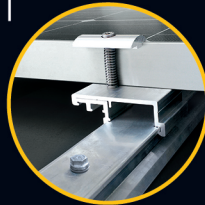
info@dome-solar.com

**www.dome-solar.com**



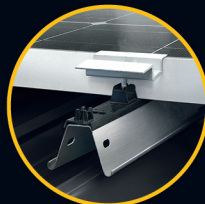
## PITCHED ROOFS RANGE

### TRAPEZOIDAL SHEET METAL AND SANDWICH PANEL



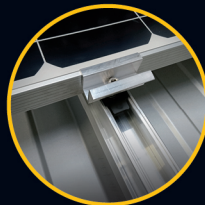
#### ITAL-SOLAR ETN

Fixed into the purlins  
Landscape mode  
Universal clamps for all framed modules  
Special clipping for laminated module  
Aluminum rails



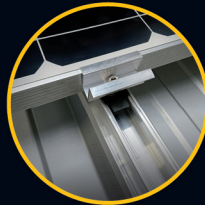
#### HÉLIOS B² ATec and ETN

Fixed into the purlins  
Landscape mode  
Only 3 components  
Clamps for framed modules  
Steel rails



#### KOCYSUN + ATec

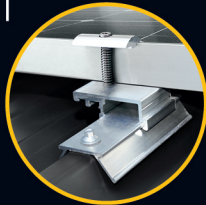
Fixed into the purlins  
Landscape centered or non-centered on the rails  
Universal clamps for all framed modules  
Aluminum rails



#### KOCYSUN i+ ATec

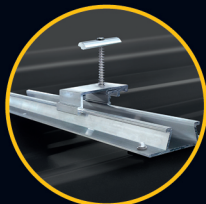
Fixed into the purlins  
Landscape centered or non-centered on the rails  
Polyurethane or rock wool sandwich panels  
Aluminum rails

### TRAPEZOIDAL SHEET METAL



#### EB-SOLAR ETN

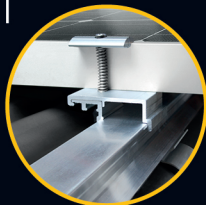
Fixed into the sheet metal roof  
Landscape mode  
Universal clamps for all framed modules  
Aluminum rails



#### RB-SOLAR

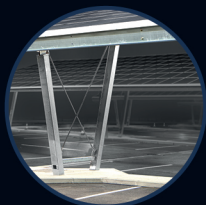
Fixed into the sheet metal roof  
Portrait mode  
Universal clamps for all framed modules  
Aluminum rails

### METAL AND CEMENT CORRUGATED ROOFS



#### FIBRO-SOLAR ETN

Fixed into the purlins  
Landscape mode  
Universal clamps for all framed modules  
Aluminum rails



#### HÉLIOS RC3 ETN

Portrait or landscape mode  
Installation from above (avoid to damage modules)  
With or without splice joint  
Modules are maintained by an extra slim aluminum hood cover  
Steel rails

## CARPORTS RANGE

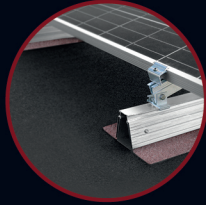
## FLAT ROOFS RANGE

### BITUMEN



#### ROOF-SOLAR BITUMEN ATec and ETN

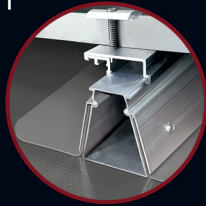
Waterproofing preserved (no perforation required)  
Light system (no ballast)  
Bituminous membrane  
Universal clamps for all framed modules  
Aluminum rails



#### ROOF-SOLAR TILTED BITUMEN ETN

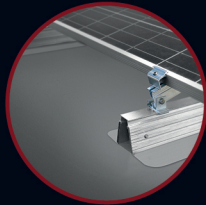
Waterproofing preserved (no perforation required)  
Light system (no ballast)  
Tilt options of the panel: 5, 10 or 15°  
Bituminous membrane  
Universal clamps for all framed modules  
Aluminum rails

### PVC



#### ROOF-SOLAR PVC ETN

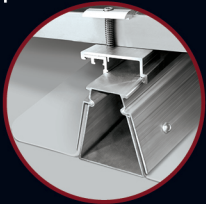
Waterproofing preserved (no perforation required)  
Light system (no ballast)  
PVC membrane  
Universal clamps for all framed modules  
Aluminum rails



#### ROOF-SOLAR TILTED PVC ETN

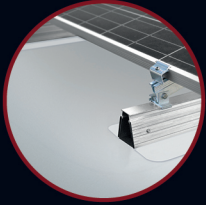
Waterproofing preserved (no perforation required)  
Light system (no ballast)  
Tilt options of the panel: 5, 10 or 15°  
PVC membrane  
Universal clamps for all framed modules  
Aluminum rails

### TPO



#### ROOF-SOLAR TPO ETN

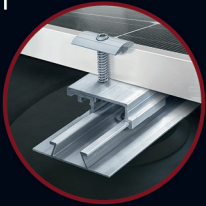
Waterproofing preserved (no perforation required)  
Light system (no ballast)  
TPO membrane  
Universal clamps for all framed modules  
Aluminum rails



#### ROOF-SOLAR TILTED TPO ETN

Waterproofing preserved (no perforation required)  
Light system (no ballast)  
Tilt options of the panel: 5, 10 or 15°  
TPO membrane  
Universal clamps for all framed modules  
Aluminum rails

### EPDM



#### ROOF-SOLAR EPDM ETN

Fixed to supporting structure  
Portrait or landscape mode  
Light system (no ballast)  
EPDM membrane  
Universal clamps for all framed modules  
Aluminum rails

## OUR ADVANTAGES



[www.dome-solar.com](http://www.dome-solar.com)

## OUR ENGINEERING OFFICE

Technical on site assistance offered for all your projects:

In depth study

Phone and on-site assistance

Layout plans supplied

Calculation notes for not standard applications

## OUR CERTIFICATIONS

The performance and reliability of our mounting systems have been recognized and validated by:

ETN (Assessment of New Techniques)

ATEX (Technical Evaluation of Experimentation)

ATec (Technical Evaluation)

## OUR ADAPTABILITY

ALL OUR UNIVERSAL AND EXTERNAL CLAMPS ARE DESIGNED FOR ALL TYPES OF FRAMED SHAPED MODULE.

## OUR BENEFITS

Our products are made of:

ALUMINUM  
STAINLESS STEEL  
STEEL

## OUR RELIABILITY

Warranty on each product means a robust and durable solution.

CERTIFIED  
SYSTEMS

PATENTED  
TECHNIQUE

