



DOME
SOLAR
SOLAR MOUNTING SYSTEMS

PITCHED ROOFS
FLAT ROOFS
CANOPIES



MADE IN FRANCE

CONTENT

1. ABOUT US

A MESSAGE FROM THE CEO	4-5
DOME SOLAR MISSION & VISION	6-7
PLANET PASSIONATE	8-9

2. PITCHED ROOFS

HELIOS B ²	12
KOGYSUN + & I+	13
ITAL-SOLAR	14
S360M	15
FIBRO-SOLAR	16
NPA 3.45	17
NPA	18
D160 BIFACIAL	19
RB-SOLAR	20
NPO NPA	21

3. FLAT ROOFS

ROOF-SOLAR / BITUMEN, PVC, TPO	26-27
ROOF-SOLAR / EPDM	30-31

4. SOLAR CANOPIES

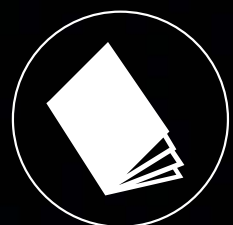
HELIOS RC3	36
------------	----

5. DOME SOLAR • INSPIRED BY THE SUN

OUR PHOTOVOLTAIC INSTALLATIONS / PITCHED ROOFS, FLAT ROOFS AND CANOPIES	40-41
---	-------

6. RESOURCES

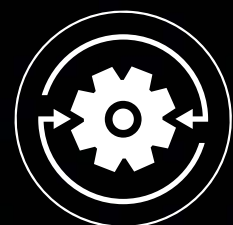
ONLINE QUOTE REQUEST, SEARCH ENGINE, TRAINING, APP	42-43
--	-------



THE WIDEST RANGE
WITH CERTIFICATIONS
ATEC/ETN



PREMIUM
QUALITY



REACTIVE, DEDICATED
TEAM TO SUPPORT
PROJECTS

SIGNS OF TRUST

Solar is our future!

We are convinced that solar energy is not just a simple energy source. It is an essential and now indispensable component of the building envelope.

This conviction drives us and guides our ongoing innovation process aimed at simplifying installation regardless of the type of roofing, without compromising on the quality of our products.

Our strong growth in France is a stepping stone for expanding our solutions beyond our borders, thus contributing to our mission on an international scale.

Our vision is centred around two principles and commitments:

- Actively participating in the energy transition by promoting the deployment of renewable solutions,
- Continuously seeking production that guarantees a low carbon impact.

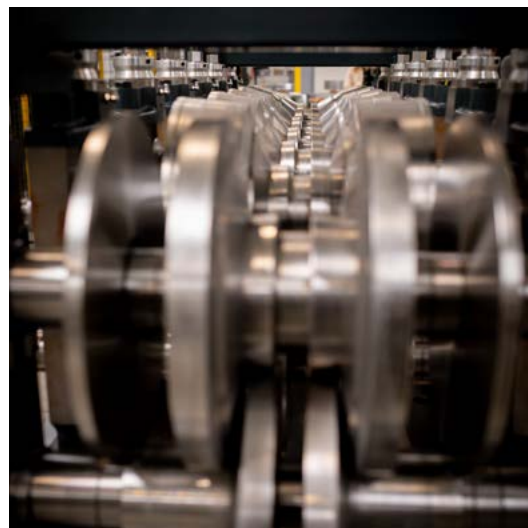
We strongly believe that each photovoltaic project we support brings us closer to a more sustainable and resilient future. It is with this spirit that all Dome Solar employees commit to being key players in the ecosystem of sustainable energy, putting their expertise and passion at your service.

Join us in our quest for a cleaner, greener, and energy-independent world.

Jean-Philippe LERAY
CEO Dome Solar

A KEY PLAYER IN ECO CONSTRUCTION

« DOME SOLAR OFFERS THE WIDEST RANGE OF MOUNTING SYSTEMS IN THE MARKET FOR PITCHED ROOFS, FLAT ROOFS AND SOLAR CANOPIES. »



TAILORED SUPPORT:

Our teams respond quickly and find solutions tailored to the limitations of your projects (systems certified by ATec and/or ETN, detailed calculation notes, training for installation teams, etc.).

A HIGH-PERFORMANCE INDUSTRIAL TOOL AT THE SERVICE OF OUR CLIENTS:

Thanks to our semi-automated profiling line, we produce our own rails in-house in Rezé, near Nantes. We are installing a second line and our own testing bench to increase our responsiveness and offer even more tailored solutions.

THE POWER OF A GROUP:

Dome Solar is part of the Kingspan Bacacier group, a major player in insulation and building envelope industry, established in 80 countries, and offering solutions for high-energy performance and low-carbon emission buildings.



DOMESOLAR AT A GLANCE

- 650 MWc installed with Dome Solar systems en 2023 (1 out of every 2 pitched roofs in France)
- 70 employees
- €35 million in revenue in 2023



- 1 Dome Solar Headquarters
3 rue Marie Anderson
44400 Rezé, FRANCE
- 2 Dome Solar La Rochelle Agency
4 rue Alfred Nobel
17440 Aytré, FRANCE
- 3 Dome Solar Montauban Agency
382 rue des Tamaris,
82000 Montauban, FRANCE

DOME SOLAR, COMMITTED PLAYER



THE USE OF LOW-CARBON STEEL IN OUR FIRST PROJECTS:

- To **reduce the carbon impact by three times** (from 2,8T to 800kg of CO2 per ton of steel)
- Thanks to use of recycled steel on one hand, and renewable energies in the raw materials' manufacturing process on the other hand.
- Profiled in France with specific traceability.



CARBON

Net-zero carbon manufacturing by 2030



ENERGY

60% direct renewable energy use by 2030



CIRCULARITY

100% All Quadcore™ insulation to utilise upcycled PET by 2025

WITHIN A GROUP COMMITTED TO A « PLANET PASSIONATE » PROGRAM.

OUR PITCHED ROOF MOUNTINGS

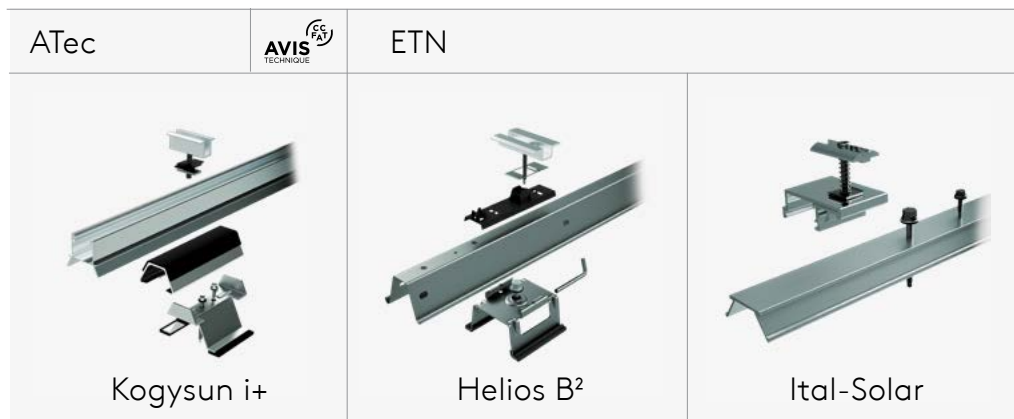


FIXING IN THE PURLIN

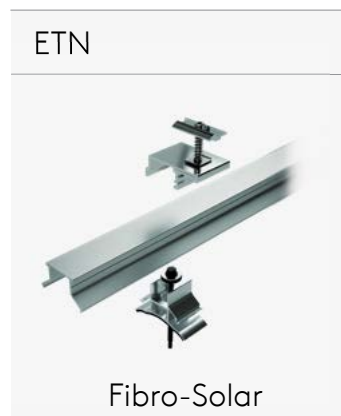
SINGLE SKIN METAL ROOFS /



SANDWICH PANELS /

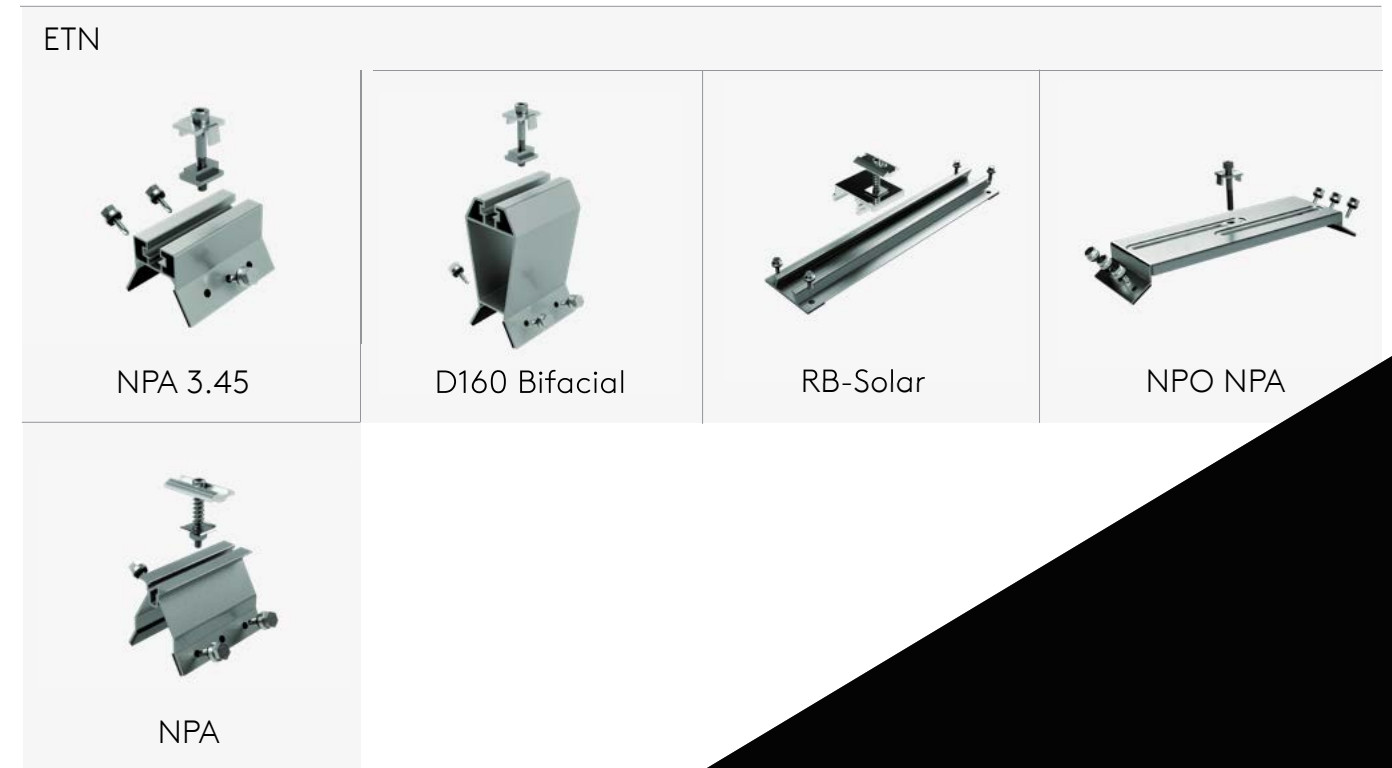


FIBER-CEMENT SHEETS /



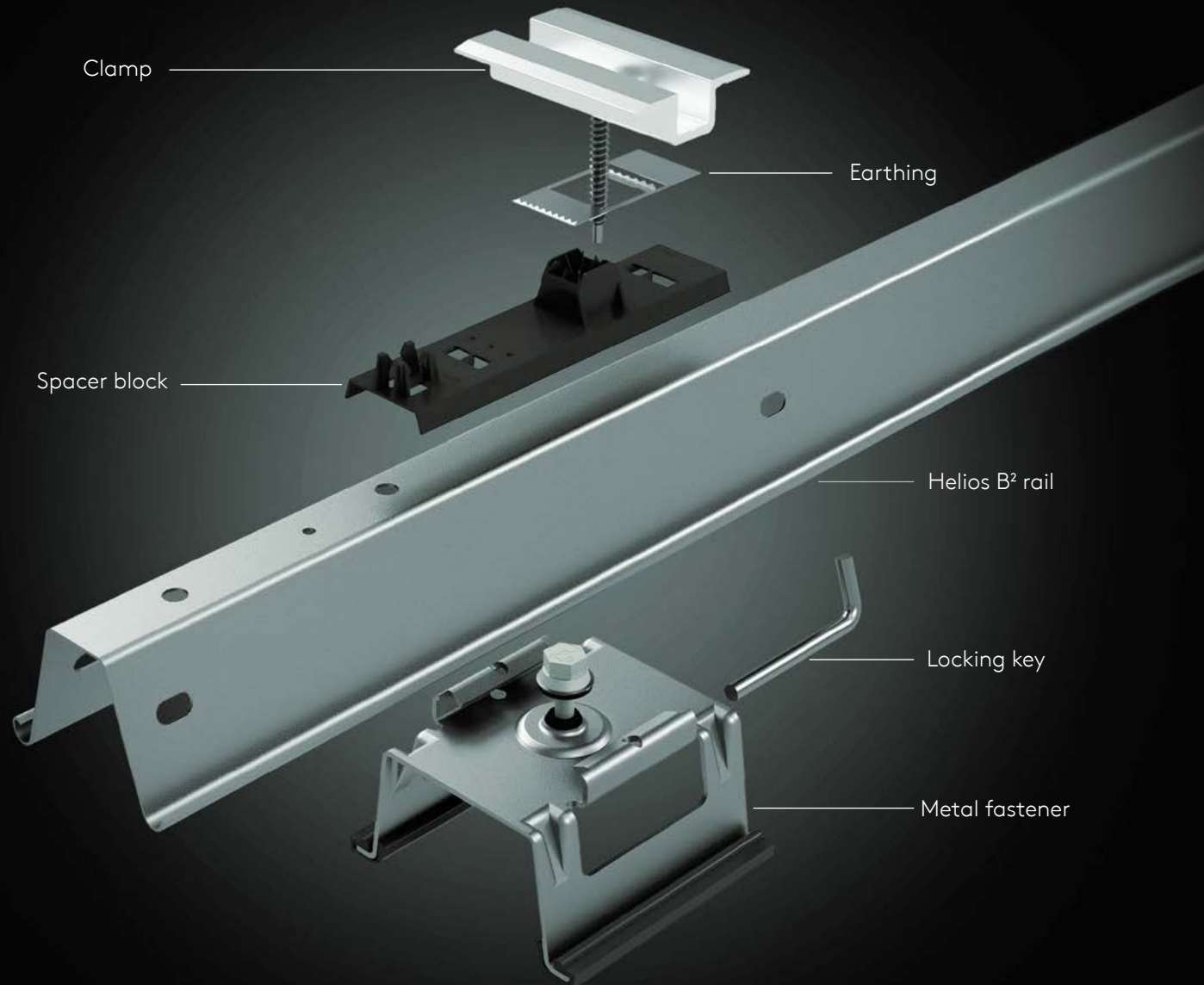
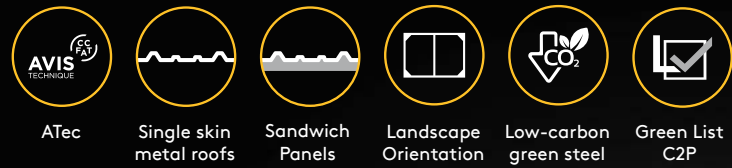
FIXING ON THE METAL SHEET

SINGLE SKIN METAL ROOFS /



HELIOS B²

Fixing in the purlin



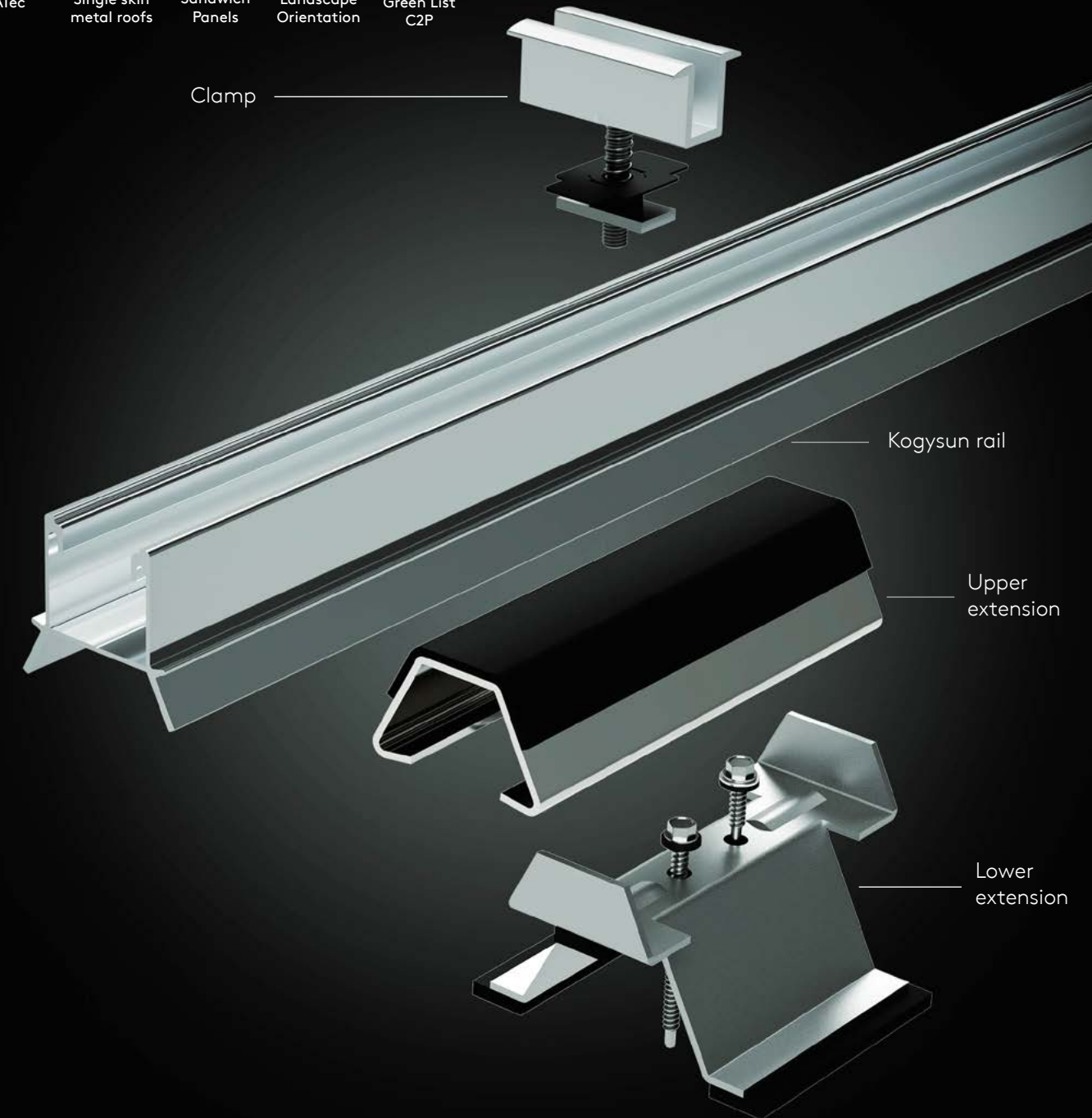
THE ADVANTAGES OF THE HELIOS B² SYSTEM.

- Fastening only in the purlin without drilling the roof metal sheet.
- Custom cut to measure rails to the width of the PV module for quick installation.
- Large ventilation space under the module (92 mm air gap).



KOGYSUN + & I+

Fixing in the purlin



THE ADVANTAGES OF THE KOGYSUN + & I+ SYSTEM.

- Patented system with extension that prevents insulation compression.
- The only system with ATEC approval for rock wool and PIR sandwich panels, and single metal sheet panels.
- Enlarged ventilation space under the module > 100 mm.





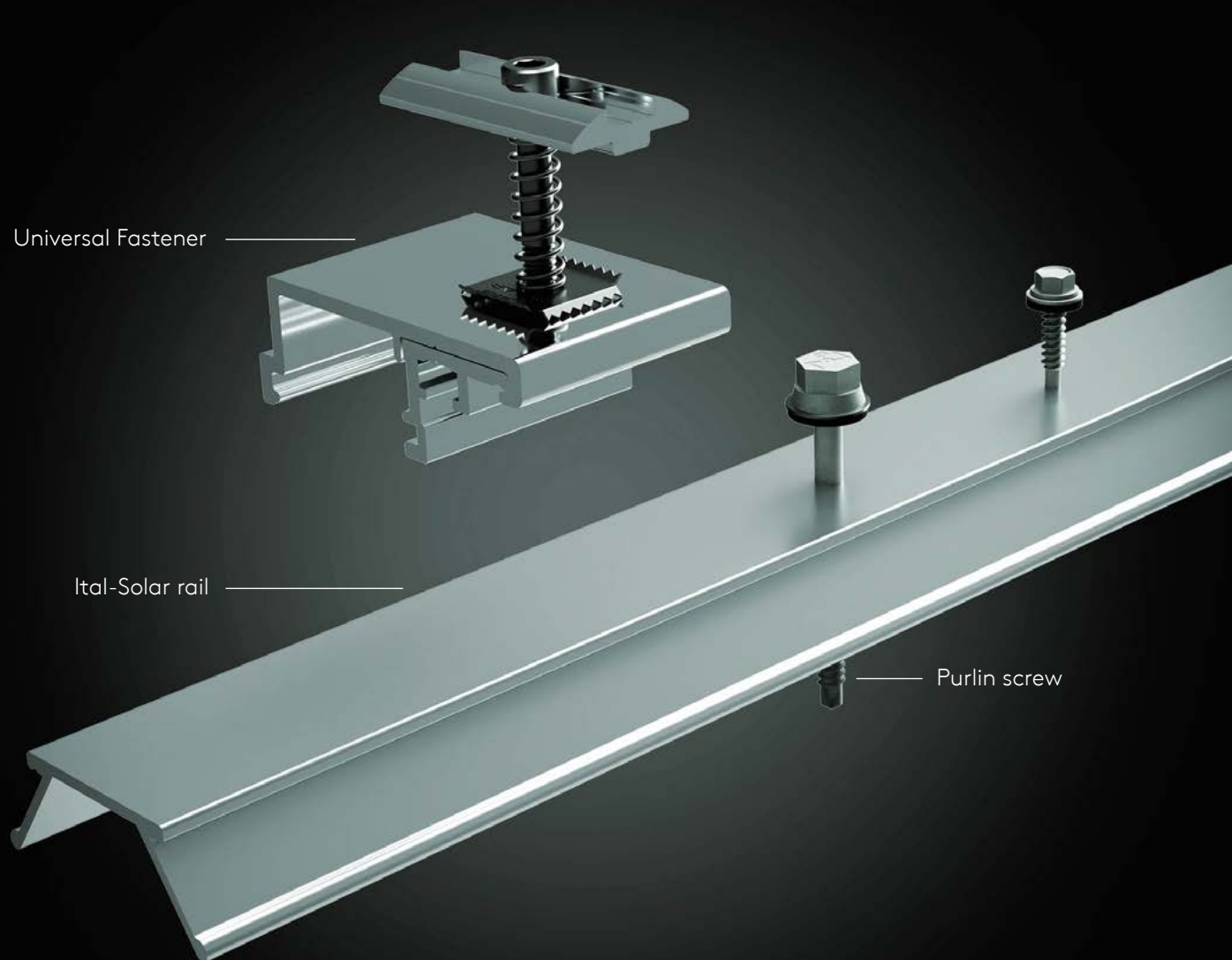
ETN



Single skin metal roofs



Landscape Orientation



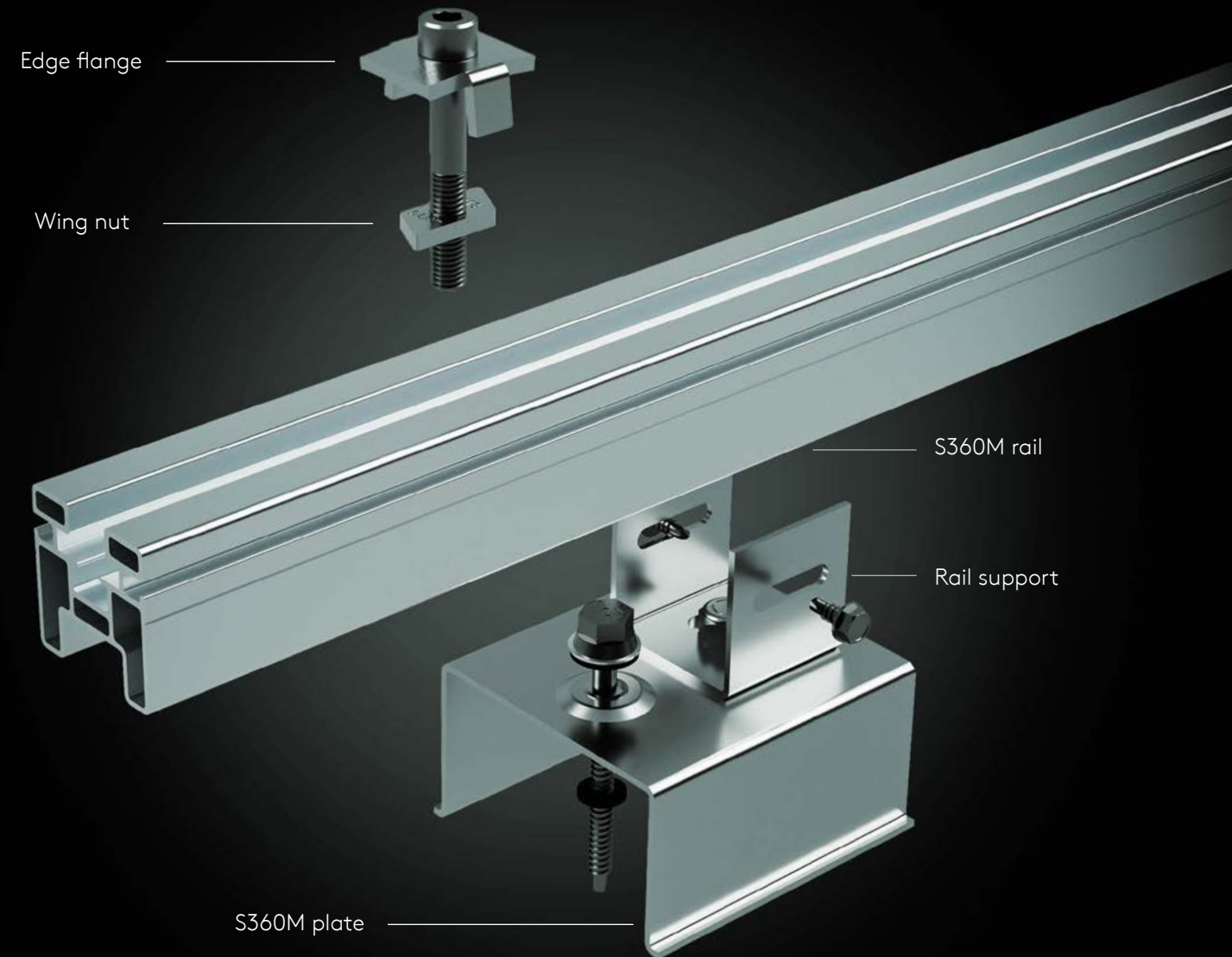
ETN



Single skin metal roofs



Landscape Orientation



THE ADVANTAGES OF ITAL-SOLAR SYSTEM.

- Ideal for coastal areas.
- Rail installed directly on the crown of the metal sheet with purlin screw fixation + reinforcement with a joint screw.
- The smallest gap between modules : 9 mm



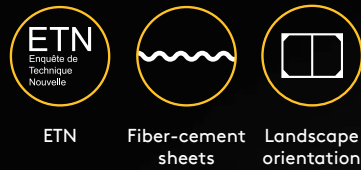
THE ADVANTAGES OF THE S360M SYSTEM.

- Ideal for custom projects: adapts to all geometries of metal roof decks.
- Robust: stainless steel and aluminum allow installation in coastal areas.



FIBRO-SOLAR

Fixing in the purlin



NPA 3.45

Fixing in the single skin metal roof



THE ADVANTAGES OF THE FIBRO-SOLAR SYSTEM.

- Adaptable to fiber-cement sheets or tile support sheets.
- Corrosion resistant.
- Rails are bonded together and clipped onto the support.



THE ADVANTAGES OF THE NPA 3.45 SYSTEM.

- System with an outstanding performance/quality/price ratio.
- Quick installation (suitable for coastal areas).
- Distance between modules 10 mm.
- Fixing to the sides of the crown provides stronger pull resistance.





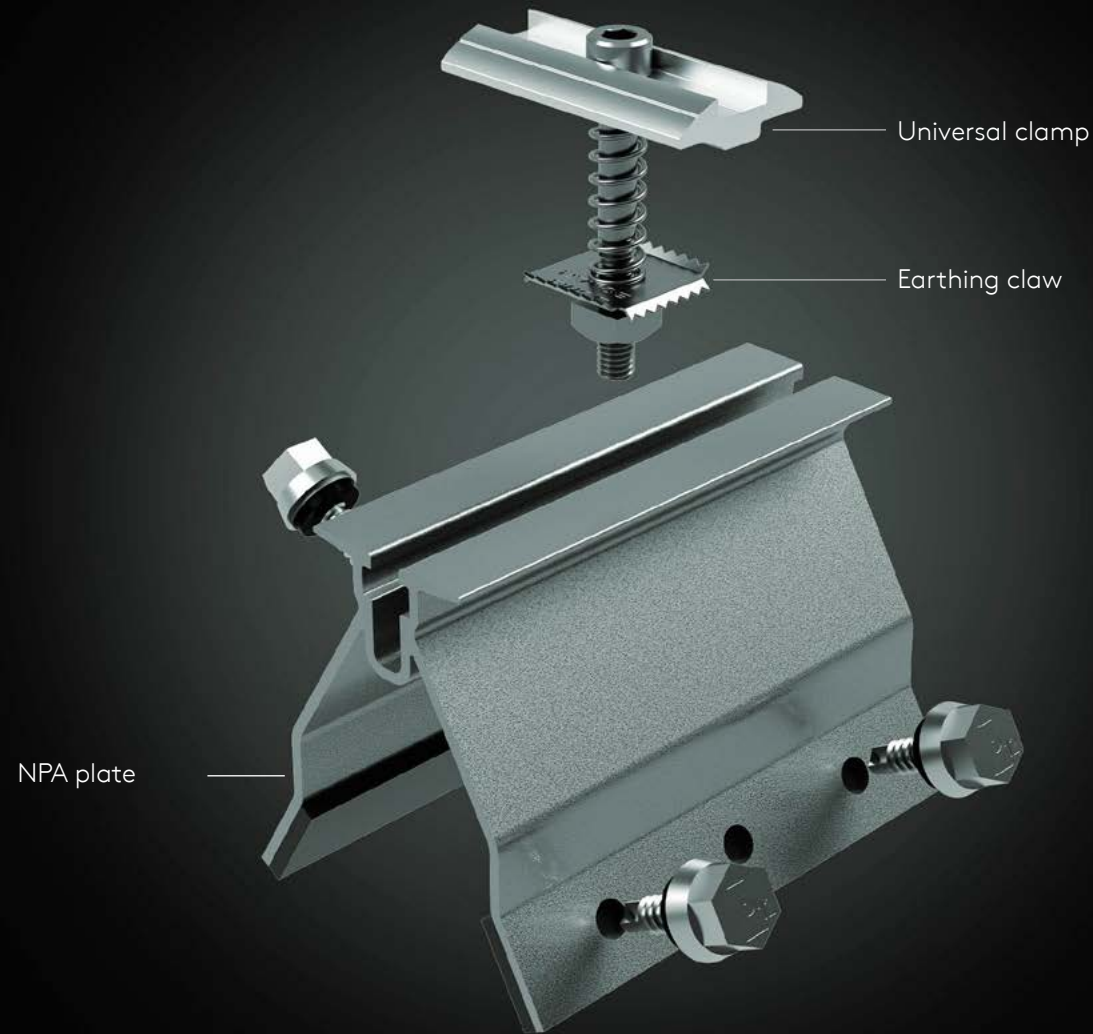
ETN



Single skin metal roofs



Landscape Orientation



ETN



Single skin metal roofs



Landscape Orientation



Reflection



THE ADVANTAGES OF THE NPA SYSTEM.

- System with an outstanding performance/quality/price ratio.
- Fixing to the sides of the crown ensures stronger pull resistance
- Distance between modules 9 mm



THE ADVANTAGES OF THE D160 BIFACIAL SYSTEM.

- Patented system.
- Optimizes performance on the underside of bifacial modules.
- 160 mm hyper-ventilated air gap for all types of modules, leading to improved performance.
- Fixing to the sides of the crown ensures stronger pull resistance





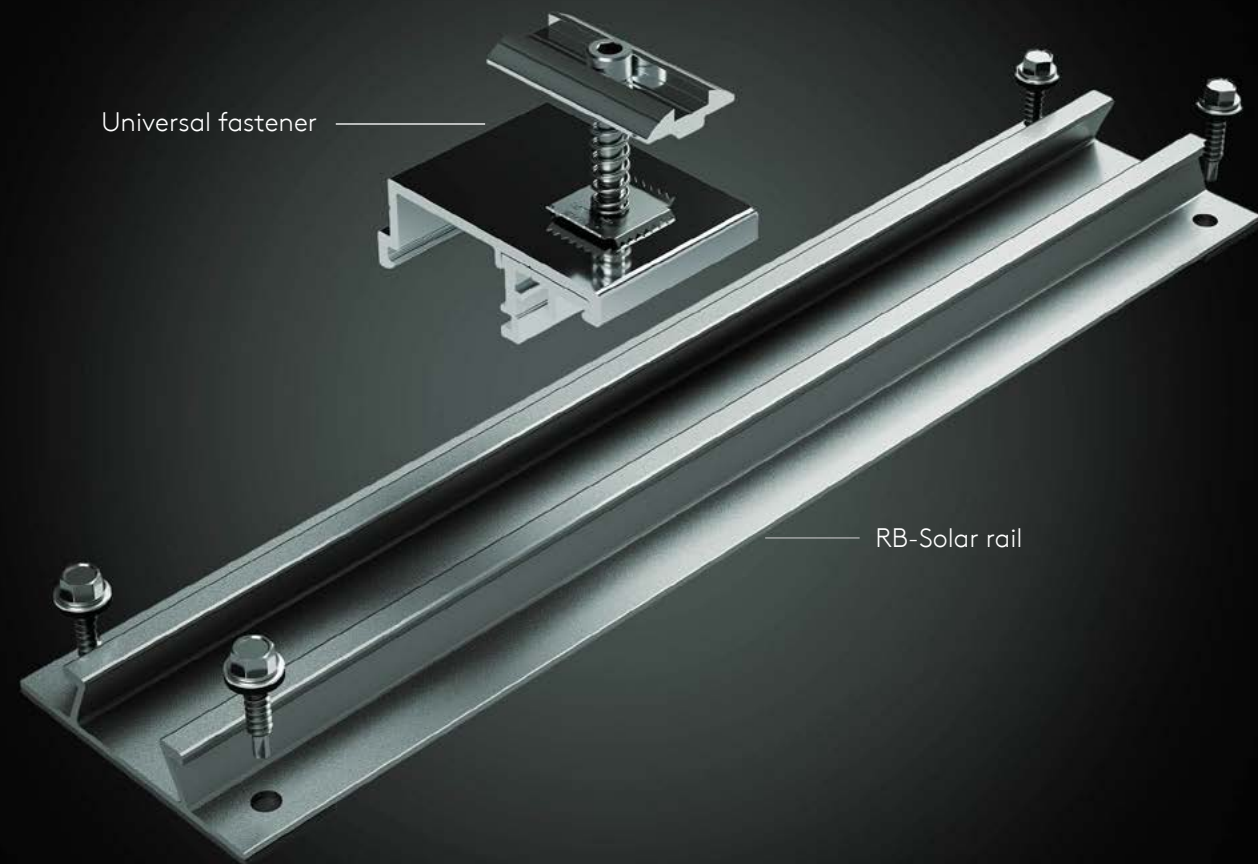
ETN



Single skin metal roofs



Portrait Orientation



THE ADVANTAGES OF THE RB-SOLAR SYSTEM.

- Possibility of custom-made rails (excluding ETN).
- Adaptable from the gutter to the ridge.
- The universal spring loaded clamp provides easy and fast installation by clipping onto the mini rail
- Fitted EPDM strips ensure waterproofing around screws



ETN



Single skin metal roofs



Portrait orientation



Landscape Orientation



THE ADVANTAGES OF THE NPO NPA SYSTEM.

- Approved for installations on large roofs and residential buildings (NPO NPA PE: tiles)
- Fixation into the sides of the crown, higher resistance to pull force







UNIVERSAL FASTENER

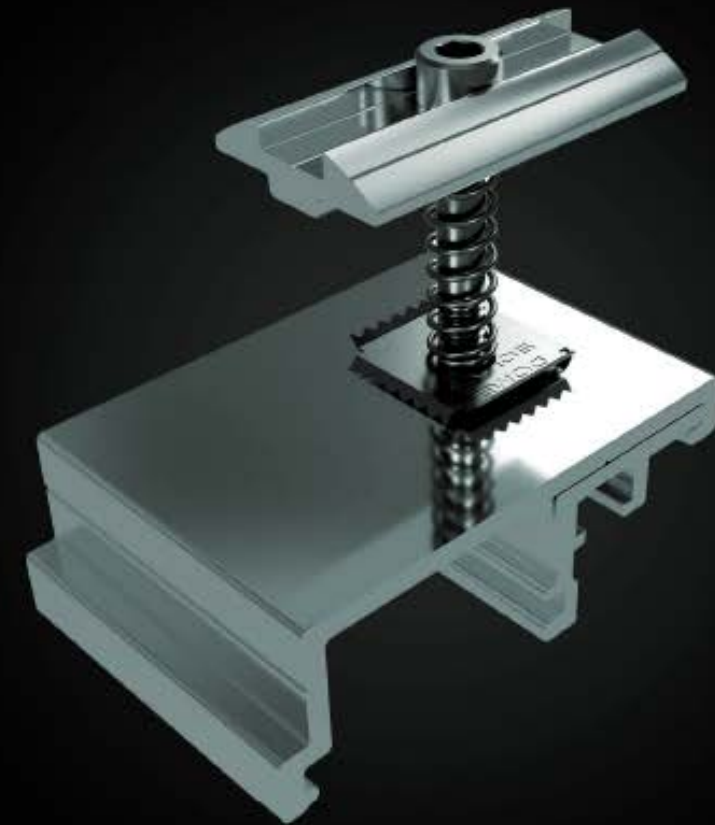
FIXINGS USED ON MOST OF OUR SYSTEMS.

PITCHED ROOFS /

- ITAL-SOLAR
- EB-SOLAR
- RB-SOLAR
- FIBRO-SOLAR

FLAT ROOFS /

- ROOF-SOLAR BITUMEN
- ROOF-SOLAR PVC
- ROOF-SOLAR TPO
- ROOF-SOLAR EPDM



A SIMPLE AND FAST MODULE MOUNTING

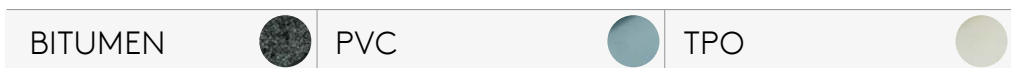
Thanks to its pre-mounted spring, clipping onto the rail is effortless and simplifies the grounding of the modules through its claw.

OUR FLAT ROOFS MOUNTINGS



WELDED WATERPROOFING RAIL

TYPE OF WATERPROOFING /



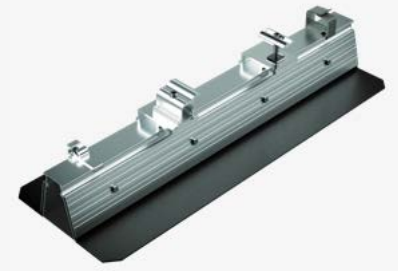





OUR RAILS WITH PRE-MOUNTED WATERPROOFING STRIPS /

BENEFITS

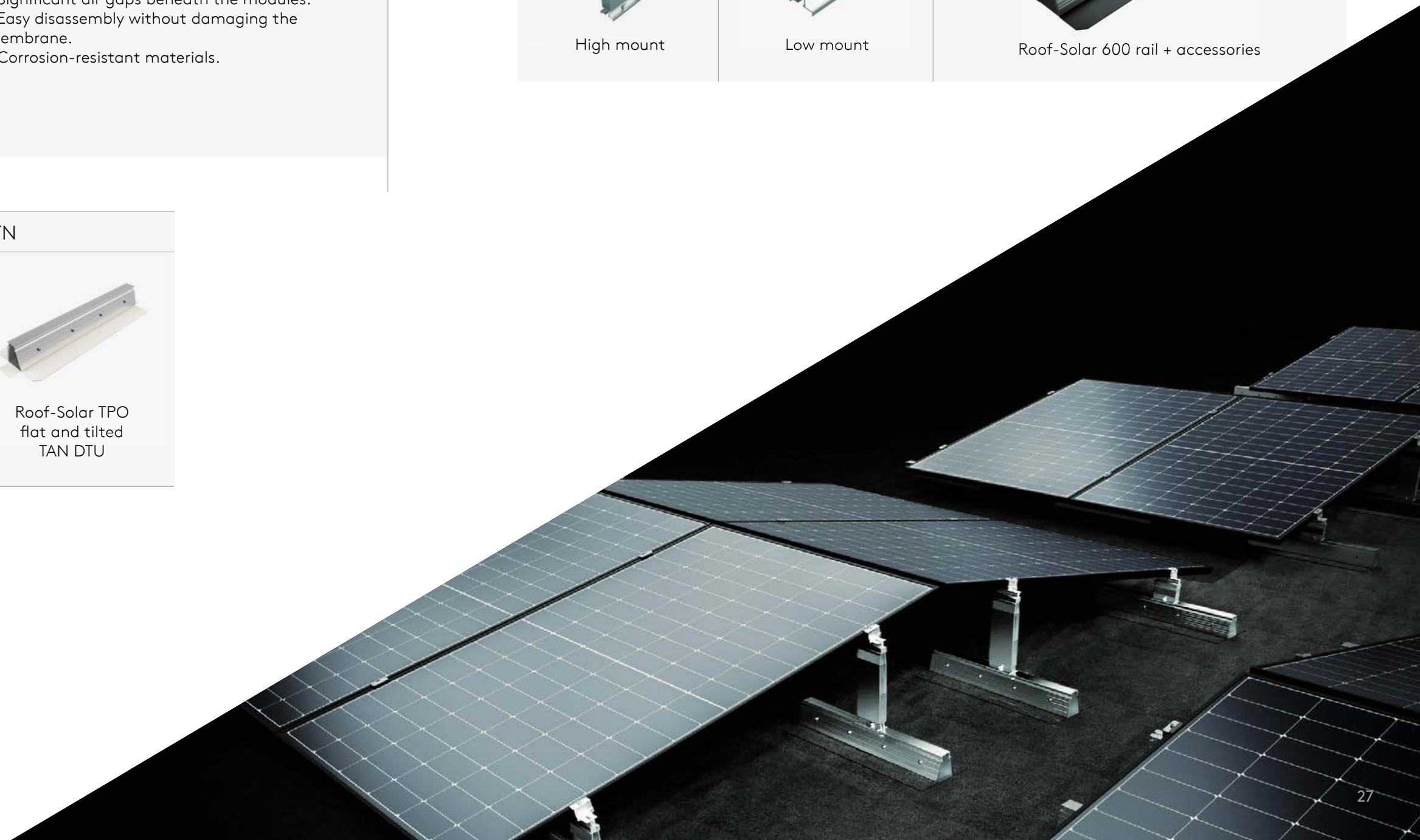
- All types of buildings: buildings subject to biodiversity laws, logistics platforms, commercial, and residential buildings.
- No waterproofing penetration.
- Easy installation.
- Lightweight system.
- Panels can be tilted up to 10°.
- Significant air gaps beneath the modules.
- Easy disassembly without damaging the membrane.
- Corrosion-resistant materials.

MOUNTS /

TILTED		FLAT
		
High mount	Low mount	Roof-Solar 600 rail + accessories

ATec	AVIS TECHNIQUE		ETN
			
Roof-Solar BITUMEN flat and tilted TAN DTU	Roof-Solar PVC flat and tilted TAN DTU	Roof-Solar TPO flat and tilted TAN DTU	

ATEx	CSTB le futur en construction
	
Roof-Solar BITUMEN TAN GP	



ZOOM ON THE COMPLEX COMPONENTS

ROOF-SOLAR BITUMEN/PVC/TPO

1 LOAD-BEARING ELEMENT RIBBED STEEL SHEETS

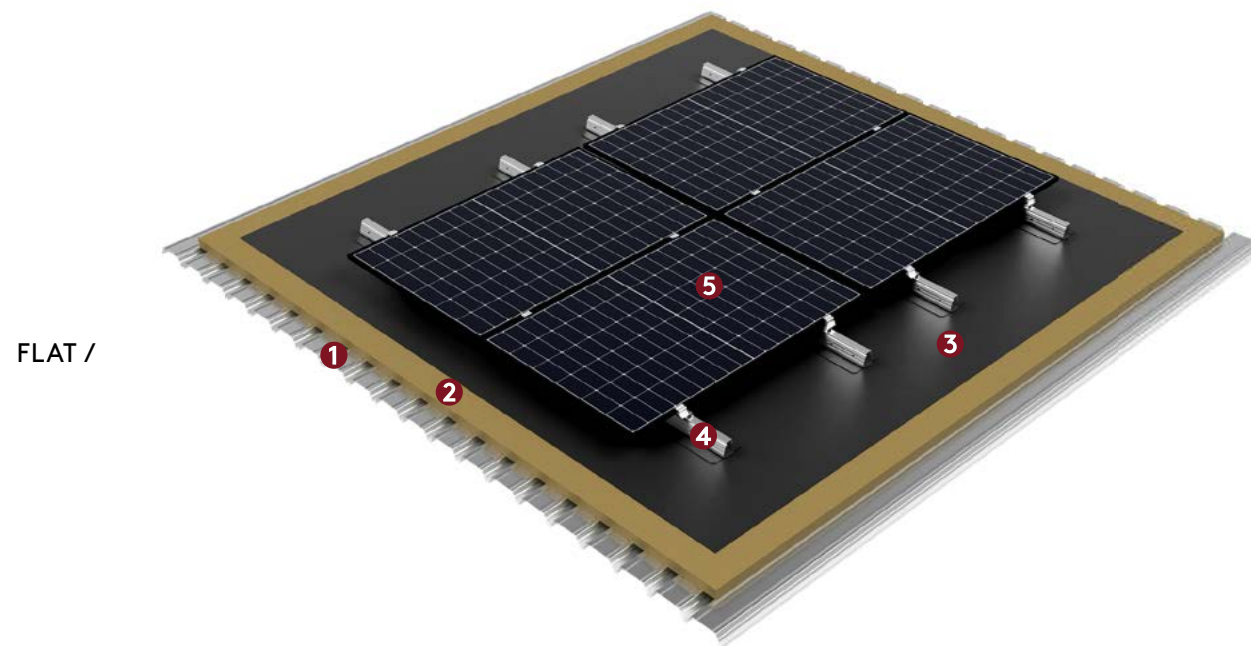
2 INSULATION PANELS CLASS C COMPRESSION

3 WATERPROOFING MEMBRANE

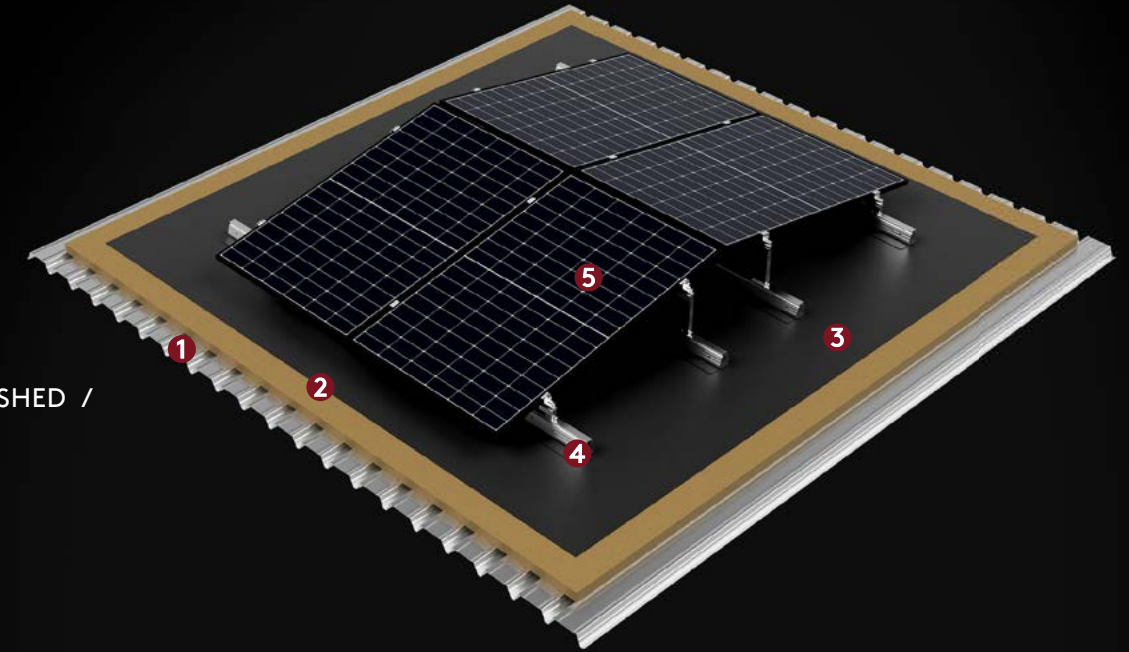
4 ROOF-SOLAR SYSTEM

- ROOF-SOLAR BITUMEN flat or tilted double/simple shed
- ROOF-SOLAR PVC flat or tilted double/simple shed
- ROOF-SOLAR TPO flat or tilted double/simple shed

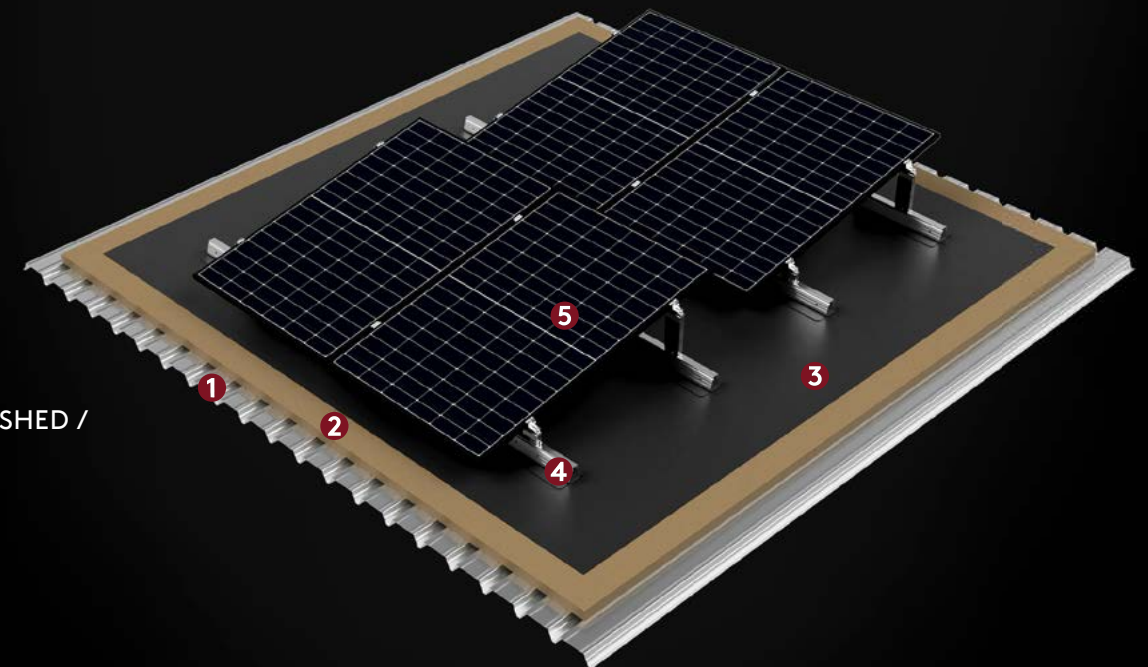
5 REFERENCED PHOTOVOLTAIC MODULE



FLAT /



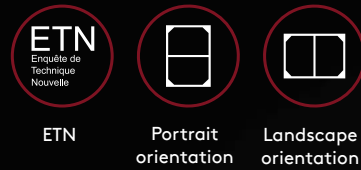
TILTED
DOUBLE SHED /



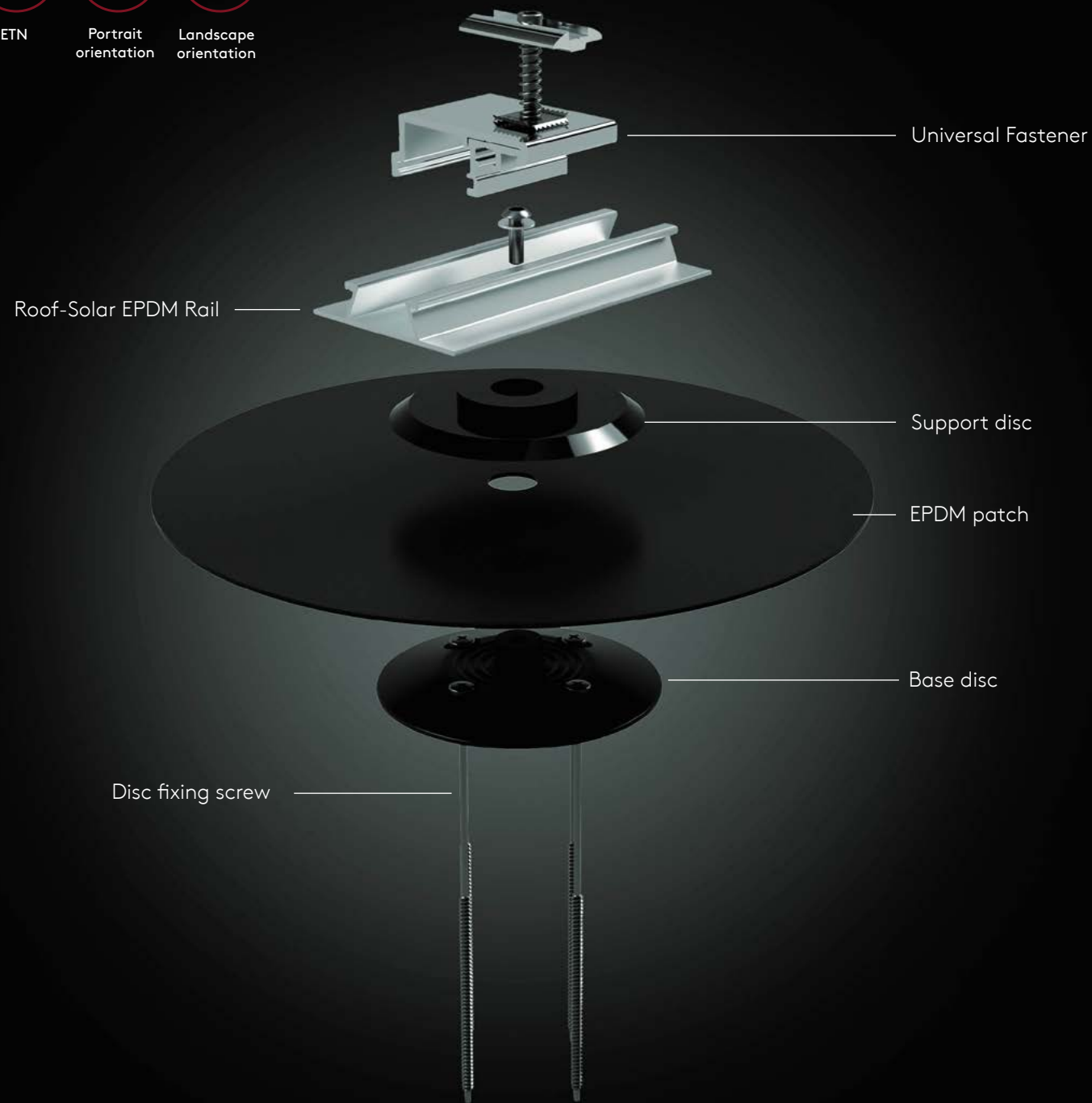
TILTED
SIMPLE SHED /

ROOF-SOLAR EPDM

Mechanically fixed base disc to the roof



ETN
Portrait orientation
Landscape orientation



THE ADVANTAGES OF THE ROOF-SOLAR EPDM SYSTEM.

- Lightweight yet resistant system
- Highly durable extruded polyamide disc filled with 30% fiberglass



MECHANICALLY FIXED BASE DISC TO THE ROOF

TYPE OF WATERPROOFING /

EPDM



OUR MOUNT /

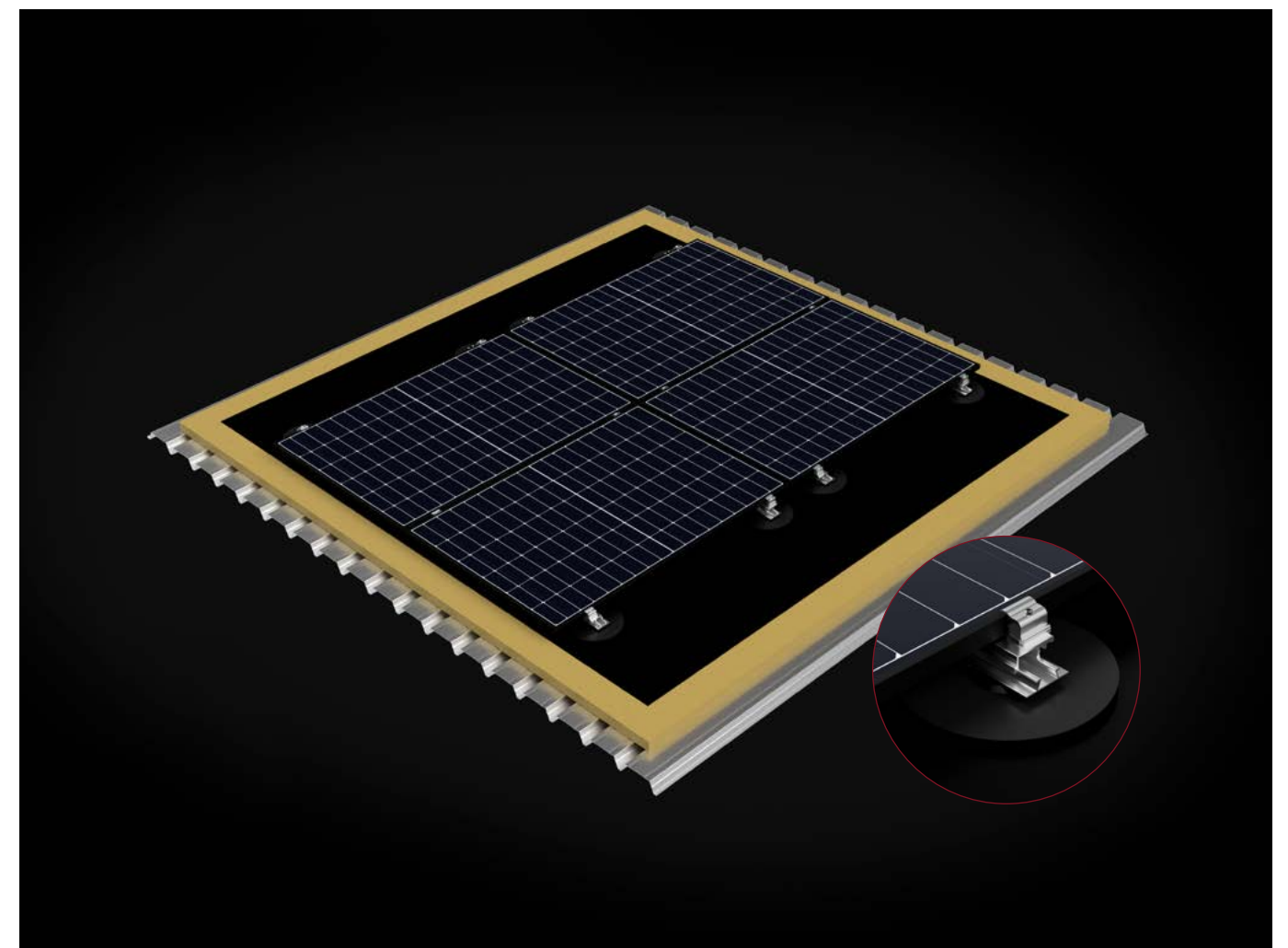
BENEFITS

- All types of buildings: Buildings subject to biodiversity law, logistics centres, commercial centres, and residential buildings
- Extra lightweight system
- Highly durable extruded polyamide disc filled with 30% fiberglass
- Flat system only
- Can be used on roofs with the slopes exceeding 5°
- Corrosion-resistant materials

ETN



Roof Solar EPDM





CANOPIES MOUNTINGS

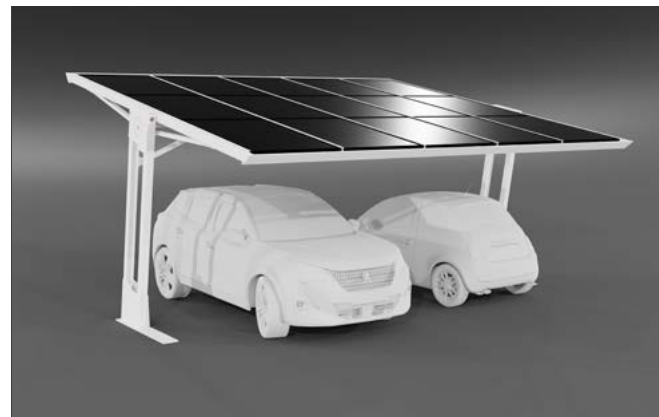


SOLAR CANOPIES OFFER

CARPORTS < 30 kWc /

Option 1: Small Carports suitable from 1 to 3 car spaces

Suitable for private households, small area car parks or areas with interrupted layout where small / compact carports in multiple combinations can fit in perfectly



STANDARD CANOPIES 50 - 200 kWc /

Option 2: Medium - Large carports

Three types of canopies:

- Single slope
- Double slope
- Y slope

Water escape profile (included) and gutter profile (optional extra) offer a great weather protection



SOLAR CANOPIES > 300 kWc /

Option 3 : Custom Solar Canopies

Custom made to your project needs.

Ideal for agricultural fields to create shades for animals and plants

Adaptable to any size car parks

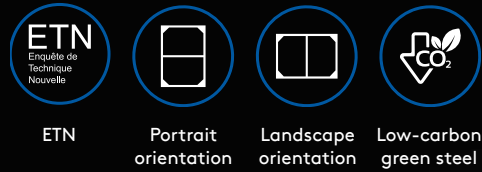


THE BENEFITS

- A dedicated and specialized production and technical team
- In-house production line for rail profiling
- Optional custom-made accessories, like gutter and drainage, allow a perfect waterproofing finish

HELIOS RC3

Canopies



ETN
Portrait orientation
Landscape orientation
Low-carbon green steel



Clamp

Sides cover

Clips TU + earthing

Universal gutter

Wing nut

RC3 rail

Low stop

THE ADVANTAGES OF THE HELIOS RC3 SYSTEM.

- High-quality integration system: better module load-bearing capacity, 100% steel/aluminum
- Innovative system: clipped gutters; custom rails with the possibility to slide in rails to slopes > 13m
- Fastening is done from underneath the canopy, no climbing or lifts required (subject to std heights)
- All modules are slid in between the rails one by one for fast and easy installation.



STANDARD SOLAR CANOPIES 50-200 KWC

STANDARD CARPORT CONFIGURATION 50-200 KWC

CARPORT DOUBLE T-MONORAMP /

Slope length (m)	12.08			
Numbers of bays	3	4	5	6
Longpan length (m)	25.69	32.66	40.79	47.75
Number of lines	7	7	7	7
Number of columns	22	28	35	41
Power (kWc)	65	82	103	121



CARPORT SINGLE T-MONORAMP /

Slope length (m)	6.90			
Numbers of bays	3	4	5	6
Longpan length (m)	25.69	32.66	40.79	47.75
Number of lines	4	4	4	4
Number of columns	22	28	35	41
Power (kWc)	37	47	59	69



CARPORT Y-DUALRAMP /

Slope length (m)	13.80			
Numbers of bays	3	4	5	6
Longpan length (m)	25.69	32.66	40.79	47.75
Number of lines	8	8	8	8
Number of columns	22	28	35	41
Power (kWc)	72	94	118	138





DOME SOLAR INSPIRED BY THE SUN



OUR PHOTOVOLTAIC INSTALLATIONS

Discover some of the successfully completed solar installations by our partner installers, using Dome Solar's photovoltaic mounting systems. Within our extensive range of solar installation references, you'll find a variety of building categories, including commercial premises,

factories, shopping centres, municipal buildings, agricultural sheds, warehouses, parking lot canopies, and much more.



NPA 3.45, 1 MWc
France



ROOF SOLAR BITUMEN /151.7 kWc
Morocco



HELIOS RC3 /23.31 kWc
France



HELIOS B² /501.6 kWc
France



ROOF SOLAR TPO / 500 kWc
Costa Rica



HELIOS RC3 / 432 kWc
France



KOGYSUN /290 kWc
France



ROOF-SOLAR PVC / 86 kWc
Sweden



HELIOS RC3 / 4.40 MWc
France



ITAL-SOLAR /100 kWc
France



ROOF-SOLAR BITUMEN TILTED / 51 kWc
Sweden



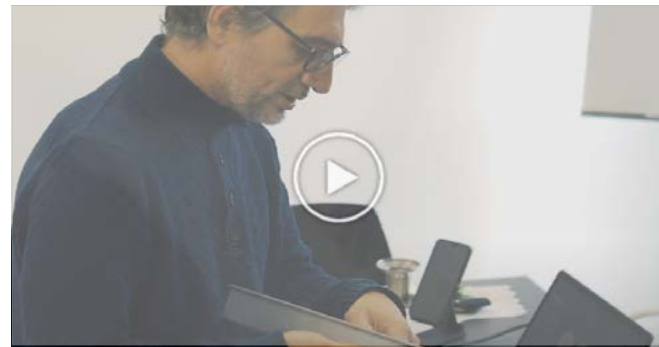
HELIOS RC3 / 4.24 MWc
France

RESOURCES



ASK FOR A QUOTE

To initiate the study of a future photovoltaic installation project with our Engineering Department, please complete the interactive form.



TRAININGS

Let yourself be guided by our training videos on our systems for pitched roofs, flat roofs, and carports. Register and attend the training of your choice.



SEARCH ENGINE FOR CERTIFIED PANELS

With this search engine, find with just one click the list of Dome Solar mounting systems certified with the chosen module reference. The validated powers as well as the type of certification (ATec, ETN) will also be indicated.



THE APP

Our application serves as a real information support during your commercial or technical appointments. It includes:

- The 3 product ranges with a presentation page for each system

- A product page consolidates all technical specifications (3D view, cross-sectional view, details of its certification(s), compatibility details in terms of roofing and photovoltaic panels, as well as a presentation video and project references accompanied by photos.



DOME SOLAR Photovoltaic Solutions 3 rue Marie Anderson
- 44400 Rezé (Nantes) - France S.A.S. DOME SOLAR with
a capital of 500 000 Euros - APE 2599B - R.C.S. Nantes
509 182 309 - N° TVA FR5750918230

VI | 06/2024



- 1 Dome Solar Headquarters
3 rue Marie Anderson
44400 Rezé, FRANCE
- 2 Dome Solar La Rochelle Agency
4 rue Alfred Nobel
17440 Aytré, FRANCE
- 3 Dome Solar Montauban Agency
382 rue des Tamaris,
82000 Montauban, FRANCE