



# OUR FLAT ROOFS MOUNTINGS

## WELDED WATERPROOFING RAIL

### TYPE OF WATERPROOFING /

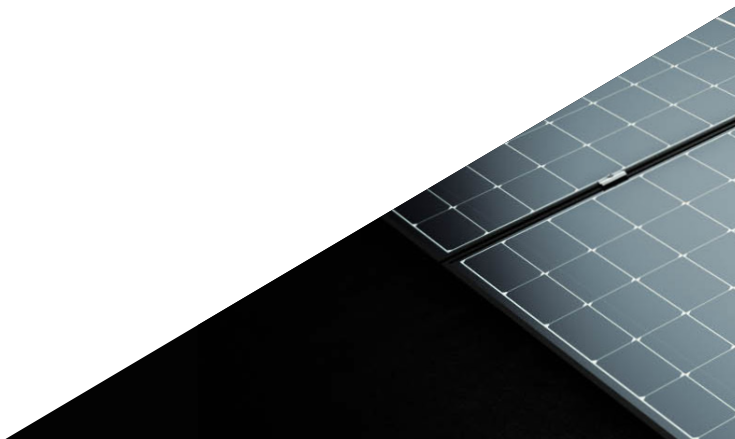
BITUMEN		PVC		TPO		EVALON®	
---------	---	-----	---	-----	---	---------	---

### OUR RAILS WITH PRE-INSTALLED WATERPROOFING STRIPS /

#### ADVANTAGES



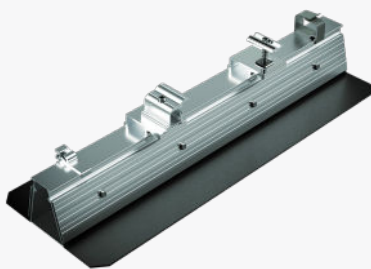
- All types of buildings : buildings subject to biodiversity laws, logistics platforms, commercial, and residential buildings.
- No waterproofing penetration.
- Easy installation.
- Lightweight system.
- Panels can be tilted up to 10°.
- Significant air gaps beneath the modules.
- Easy disassembly without damaging the membrane.
- Corrosion-resistant materials.

ATec 21/20-72		ATec 21/22-82		ATec 21/24-87		ATEx 3431	
	Roof-Solar BITUMEN flat and tilted TAN DTU		Roof-Solar PVC flat and tilted TAN DTU		Roof-Solar TPO flat and tilted TAN DTU		Roof-Solar EVALON
ATEc 21/24-86							
	Roof-Solar BITUME TAN GP						





## MOUNTS /

TILTED		FLAT
		
High mount	Low mount	Roof-Solar 600 rail + accessories





# ZOOM ON THE COMPLEX COMPONENTS

## ROOF-SOLAR BITUMEN/PVC/TPO

### 1 LOAD-BEARING ELEMENT RIBBED STEEL SHEETS\*

- The ROOFALTEO range from BACACIER : TAN DTU 42, 49, 59, 73 (including perforated in the flange) and TAN GP (106, including perforated in the core)
  - The ROOFSTYL range from ARCELOR : TAN DTU 56
  - Concrete support, wooden support
- In each case, the manufacturer can provide certification for the load-bearing trays according to the building/system ROOF-SOLAR/ climatic constraints configuration. The installation of a vapor barrier is allowed.

### 2 INSULATION PANELS CLASS C COMPRESSION\*

- ROCKACIER C NU BY ROCKWOOL
- ROCKACIER C NU ENERGY BY ROCKWOOL
- SMARTROOF C(38) BY KNAUF INSULATION
- MARTROOF C(37) BY KNAUF INSULATION
- PANOTOIT TEKFI 2 BY SAINT-GOBAIN ISOVER
- POWERDECK+ BY RECTICEL INSULATION, WITH OR WITHOUT THERMAL BARRIER

### 3 WATERPROOFING MEMBRANES

#### ROOF-SOLAR BITUMEN /

Two-layer bituminous system mechanically fastened, installed according to its Technical Approval (DTA)

- IKO DUO ACIER F/G + IKO DUO ACIER 3000 FEU L4 AR/F by IKO. Broof (t3).

In partnership with :



#### ROOF-SOLAR PVC /

Synthetic waterproofing membrane by IKO, mechanically fastened (sheet width : 1.06m) :

- ARMOURPLAN SM 150 (minimum thickness 1.5mm). Broof (t3).

In partnership with :



#### ROOF-SOLAR TPO /

Synthetic waterproofing membrane by ELEVATE, mechanically fastened (sheet width : 1m) :

- ULTRAPLY TPO minimum thickness 1.5mm. Broof (t3).

In partnership with :



### 4 ROOF-SOLAR SYSTEM

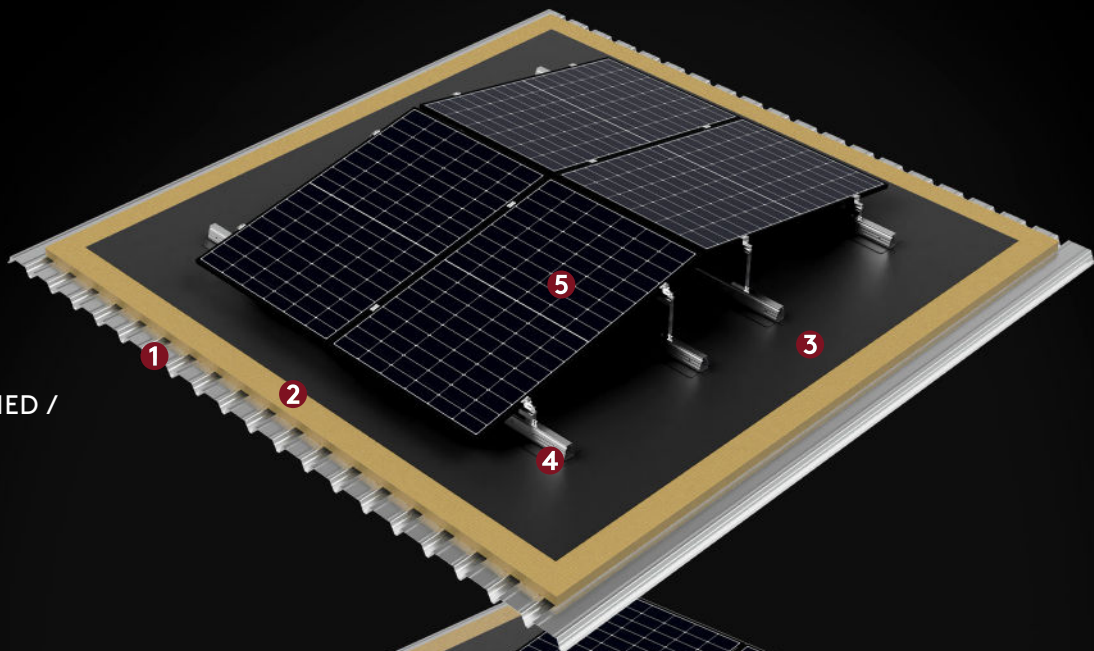
- ROOF-SOLAR BITUMEN system, flat or tilted, double/single shed
- ROOF-SOLAR PVC system, flat or tilted, double/single shed
- ROOF-SOLAR TPO system, flat or tilted, double/single shed

### 5 REFERENCED PHOTOVOLTAIC MODULE

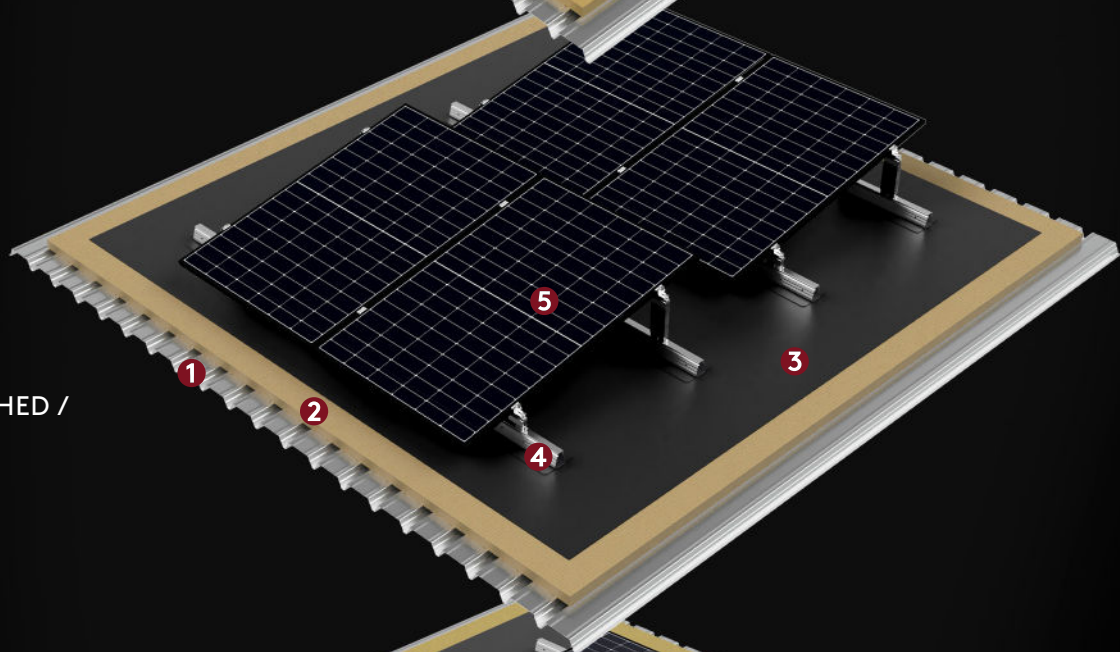
- See verification grid or technical evaluation.

\* For combinations: load-bearing elements, insulation, and system versions – refer to the technical evaluations.

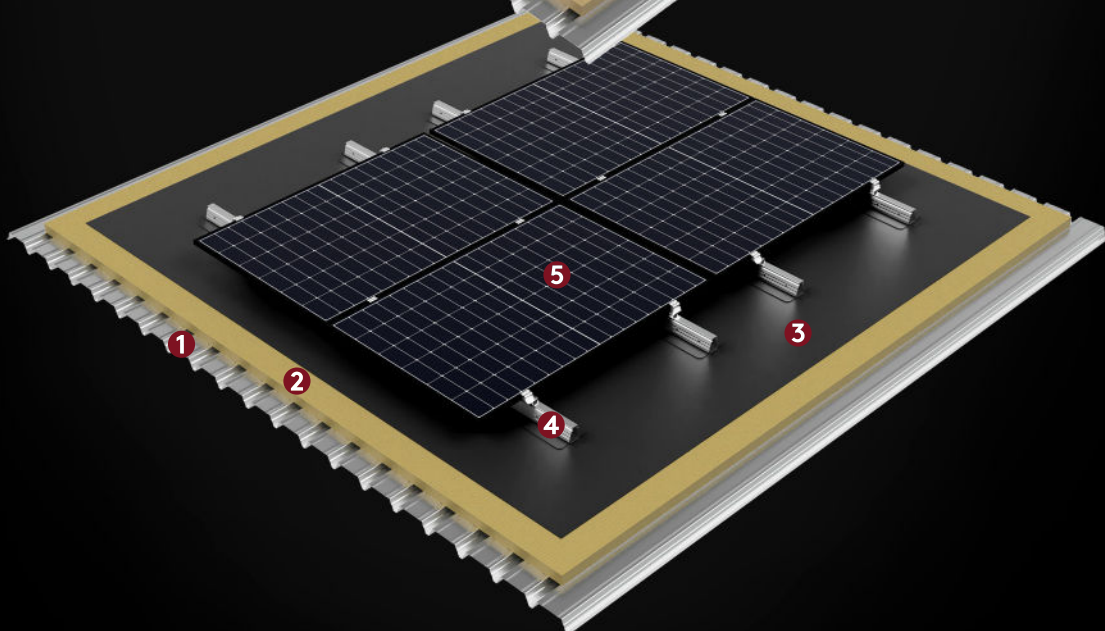
TILTED  
DOUBLE SHED /



TILTED  
SINGLE SHED /



FLAT /





---

# Contact Details

---

EN

## Dome Solar

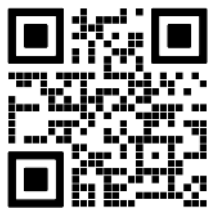
3 Marie Anderson Street | 44400 REZÉ | France

T: +33 (0)2 40 67 92 92

E: [info@dome-solar.com](mailto:info@dome-solar.com)

[www.dome-solar.com](http://www.dome-solar.com)

For the contact details of each department, please visit  
[www.dome-solar.com/contact](http://www.dome-solar.com/contact)



Dome Solar reserves the right to modify product specifications without prior notice. The products listed in this document should not be considered as stock items, and reference should be made to the current Dome Solar price list or advice sought from the Dome Solar customer service. The information, technical details, installation instructions, etc., included in this documentation are given in good faith and apply to the described uses. Usage recommendations must be verified for their suitability and compliance with actual requirements, specifications, and all applicable laws and regulations. For other applications or usage conditions, Dome Solar offers a technical advisory service, which should be consulted for the use of Dome Solar products not specifically described in this document.

To ensure you are consulting the most recent and accurate product information, please scan the QR code above.

DOMESOLAR Photovoltaic Solutions

3 Marie Anderson Street – 44400 Rezé (Nantes) – France

S.A.S. DOMESOLAR with a share capital of 500,000 Euros – APE 2599B – R.C.S. Nantes 509 182 309 –

VAT No. FR5750918230

