



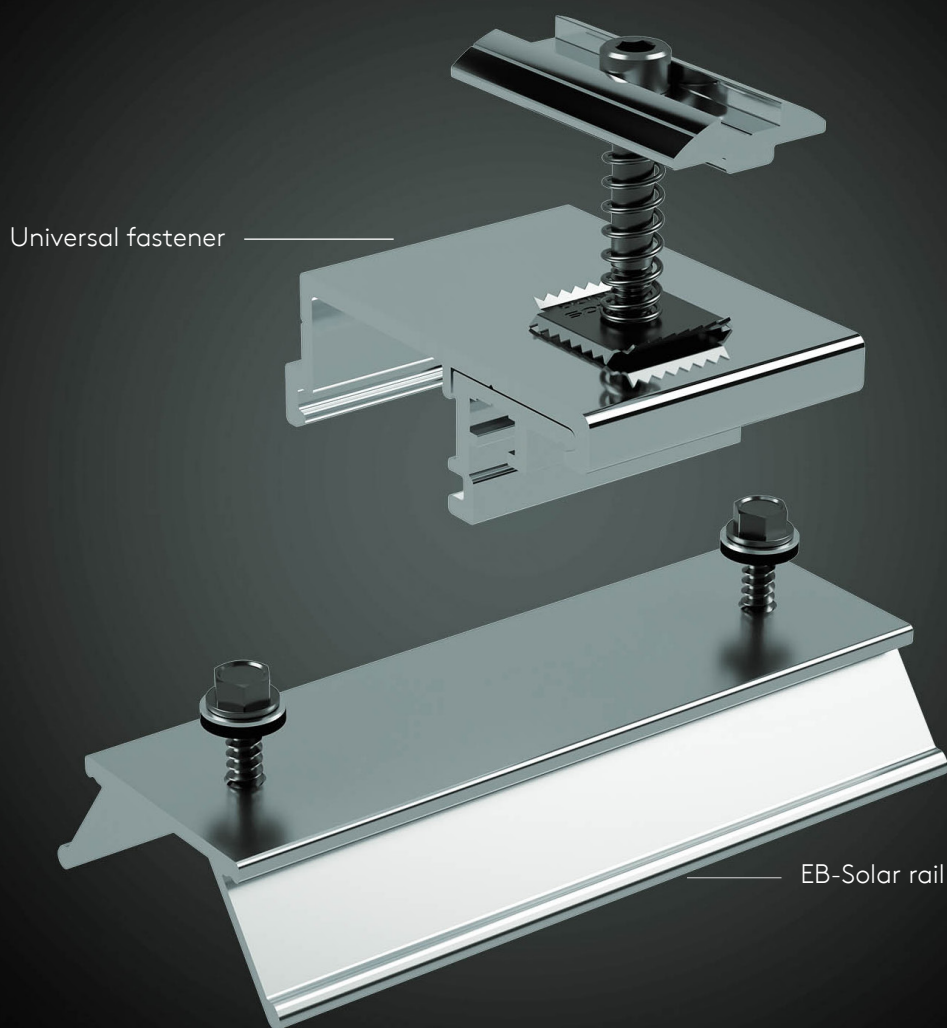
ETN
A27T2312



Single skin
metal roofs



Landscape
orientation



THE ADVANTAGES OF THE EB-SOLAR SYSTEM.

- System mounts directly into the tray, easy installation thanks to pre-drilled rails.
- Composed of 97% aluminum: lightweight, strong, recyclable, and corrosion-resistant.
- Mounting system validated by a New Technology Survey (ETN).



Contact Details

EN

Dome Solar

3 Marie Anderson Street | 44400 REZÉ | France

T: +33 (0)2 40 67 92 92

E: info@dome-solar.com

www.dome-solar.com

For the contact details of each department, please visit
www.dome-solar.com/contact



Dome Solar reserves the right to modify product specifications without prior notice. The products listed in this document should not be considered as stock items, and reference should be made to the current Dome Solar price list or advice sought from the Dome Solar customer service. The information, technical details, installation instructions, etc., included in this documentation are given in good faith and apply to the described uses. Usage recommendations must be verified for their suitability and compliance with actual requirements, specifications, and all applicable laws and regulations. For other applications or usage conditions, Dome Solar offers a technical advisory service, which should be consulted for the use of Dome Solar products not specifically described in this document.

To ensure you are consulting the most recent and accurate product information, please scan the QR code above.

DOMESOLAR Photovoltaic Solutions

3 Marie Anderson Street – 44400 Rezé (Nantes) – France

S.A.S. DOMESOLAR with a share capital of 500,000 Euros – APE 2599B – R.C.S. Nantes 509 182 309 –

VAT No. FR5750918230

